



AdminStudio 2015

Installation Guide

Legal Information

Book Name: AdminStudio 2015 Installation Guide / Full and Limited Editions
Part Number: ADS-2015-IG00
Product Release Date: July 28, 2015

Copyright Notice

Copyright © 2015 Flexera Software LLC. All Rights Reserved.

This publication contains proprietary and confidential information and creative works owned by Flexera Software LLC and its licensors, if any. Any use, copying, publication, distribution, display, modification, or transmission of such publication in whole or in part in any form or by any means without the prior express written permission of Flexera Software LLC is strictly prohibited. Except where expressly provided by Flexera Software LLC in writing, possession of this publication shall not be construed to confer any license or rights under any Flexera Software LLC intellectual property rights, whether by estoppel, implication, or otherwise.

All copies of the technology and related information, if allowed by Flexera Software LLC, must display this notice of copyright and ownership in full.

Intellectual Property

For a list of trademarks and patents that are owned by Flexera Software, see <http://www.flexerasoftware.com/intellectual-property>. All other brand and product names mentioned in Flexera Software products, product documentation, and marketing materials are the trademarks and registered trademarks of their respective owners.

Restricted Rights Legend

The Software is commercial computer software. If the user or licensee of the Software is an agency, department, or other entity of the United States Government, the use, duplication, reproduction, release, modification, disclosure, or transfer of the Software, or any related documentation of any kind, including technical data and manuals, is restricted by a license agreement or by the terms of this Agreement in accordance with Federal Acquisition Regulation 12.212 for civilian purposes and Defense Federal Acquisition Regulation Supplement 227.7202 for military purposes. The Software was developed fully at private expense. All other use is prohibited.

Contents

1	AdminStudio 2015 Installation Guide	5
	AdminStudio Editions	6
	AdminStudio 2015 Full Editions	7
	AdminStudio Limited Editions	13
	AdminStudio 2015 ZENworks Limited Edition	13
	AdminStudio 2015 Limited Edition for LANDesk Management Suite	14
	AdminStudio 2015 Symantec Limited Edition	16
	Contacting Us	17
2	AdminStudio 2015 System Requirements	19
	AdminStudio Architecture Diagram	20
	Hardware and Software Requirements	21
	AdminStudio Client Tool Machine	22
	Application Catalog Database Server	23
	Distribution Systems	23
	AdminStudio Enterprise Server / Workflow Manager Server	25
	Software Repository	25
	Automated Application Converter Requirements	26
	Virtual Machine Requirements	26
	Supported Virtual Machine Platforms	26
	VMware Requirements	27
	Microsoft Hyper-V Server Requirements	28
	Virtual Machine Image Requirements	29
	Virtual Technology Requirements	29
	Limited Edition Requirements	30
	Database Server Permissions	31
	Installing Internet Information Services (IIS)	33
	Port Requirements for Integration	34

3	Installing AdminStudio 2015	37
	Installing the AdminStudio Client Tools	38
	Installing AdminStudio Using the Installation Wizard	38
	Installing AdminStudio Silently Via Command Line	42
	Upgrading an Existing Application Catalog to AdminStudio 2015	43
	Upgrading an Application Catalog	43
	Upgrading an Application Catalog Using the User Interface	43
	Upgrading an Application Catalog Using Scripts	46
	Changing the Database Collation of the Upgraded Application Catalog	50
4	Installing AdminStudio 2015 Limited Editions	51
	Installing AdminStudio 2015 ZENworks Edition	52
	Installing AdminStudio 2015 Limited Edition for LANDesk Management Suite	56
	Installing AdminStudio 2015 Symantec Limited Edition	61
5	Activating AdminStudio	63
	About Activation	64
	About Serial Numbers	64
	About Registration	65
	Activating AdminStudio (Full Edition) Upon Initial Startup	65
	Activating AdminStudio Purchased from Flexera Software	65
	Activating AdminStudio Purchased from a Reseller	67
	Activating AdminStudio ZENworks Edition	68
	Registering and Activating AdminStudio Limited Edition for LANDesk Management Suite	70
	Registering and Activating AdminStudio Symantec Limited Edition	72
	Activation Troubleshooting	73
	General Troubleshooting	74
	Activating Through a Web Page	75
	Activating Products Silently	76
	Reactivating AdminStudio on a Different Computer	77
6	Upgrading Your Product Edition	79
7	Evaluating AdminStudio	81
	Evaluating AdminStudio Enterprise Edition Client Tools	82
	AdminStudio 2015 Evaluation Restrictions	83
	Evaluating AdminStudio's Microsoft App-V Support	83
	Evaluating the Automated Application Converter "Multiple Application" Option	84
	Evaluating the Client Tools in the Limited Edition for LANDesk Management Suite	85
	Activating AdminStudio After Evaluation Period	86
	Index	87

AdminStudio 2015 Installation Guide

Information about installing the AdminStudio is presented in the following sections:

Table 1-1 • Installing AdminStudio 2015 Client Tools

Topic	Content
AdminStudio Editions	Describes the tools and functionality available in all of AdminStudio's editions and add-on packs.
AdminStudio 2015 System Requirements	Lists the hardware and software requirements for the components of the AdminStudio client tools. Also includes an AdminStudio architecture diagram.
Installing AdminStudio 2015	<p>Describes how to install the AdminStudio client tools. This section also explains how to upgrade an existing Application Catalog to be used with AdminStudio 2015.</p> <ul style="list-style-type: none">• Installing the AdminStudio Client Tools• Upgrading an Existing Application Catalog to AdminStudio 2015
Installing AdminStudio 2015 Limited Editions	<p>Describes how to install the following AdminStudio Limited Editions:</p> <ul style="list-style-type: none">• Installing AdminStudio 2015 ZENworks Edition• Installing AdminStudio 2015 Limited Edition for LANDesk Management Suite• Installing AdminStudio 2015 Symantec Limited Edition
Activating AdminStudio	Explains how to activate your AdminStudio serial number, and provides activation troubleshooting information.

Table 1-1 • Installing AdminStudio 2015 Client Tools

Topic	Content
Upgrading Your Product Edition	Explains how to use AdminStudio's built-in upgrade capability to activate features in a higher Edition without re-installing the application.
Evaluating AdminStudio	Explains how to evaluate the AdminStudio Enterprise Edition client tools and also how to activate your product after purchasing a serial number.

AdminStudio Editions

This section explains the tools and functionality available in each of the available AdminStudio Editions:

- AdminStudio 2015 Full Editions
- AdminStudio 2015 ZENworks Limited Edition
- AdminStudio 2015 Limited Edition for LANDesk Management Suite
- AdminStudio 2015 Symantec Limited Edition

AdminStudio 2015 Full Editions

AdminStudio 2015 is available in Standard, Professional, and Enterprise Editions. You can also purchase an additional Application Virtualization Pack, Application Compatibility Pack, and Mobile Pack.

Table 1-2 • AdminStudio 2015 Full Editions

Edition	Add On Pack	Tools	Functionality
Standard	None	Repackager	<ul style="list-style-type: none"> • Repackage applications into Windows Installer format • Perform basic ISO tagging, including creation of tag files
		Legacy Distribution Wizard	<ul style="list-style-type: none"> • Prepare packages for distribution
		InstallShield 2015 (Professional Edition)	<ul style="list-style-type: none"> • Customize Windows Installer packages by either directly editing them or by creating transforms
		Tuner	<ul style="list-style-type: none"> • Customize Windows Installer packages by creating transforms
		Application Isolation Wizard	<ul style="list-style-type: none"> • Resolve component versioning conflicts
		Application Virtualization Pack	<ul style="list-style-type: none"> • Convert a package to a virtual application in the following formats: <ul style="list-style-type: none"> • Microsoft App-V (4.x and 5.0) • Citrix XenApp • VMware ThinApp (4.x and 5.x) • Symantec Workspace • Convert one package at a time
		Virtual Package Editor	<ul style="list-style-type: none"> • Edit App-V packages
		Microsoft App-V, ThinApp, and Citrix Assistants	<ul style="list-style-type: none"> • Create a customized virtual package from an InstallShield project

Table 1-2 • AdminStudio 2015 Full Editions (cont.)

Edition	Add On Pack	Tools	Functionality
Professional	<i>None</i>	<i>Same as Standard, plus:</i>	<hr/> <div data-bbox="527 386 786 453">Application Manager / Catalog Tab</div> <ul style="list-style-type: none"> • Manage applications in an Application Catalog database • Manage a package's System Center 2012 Configuration Manager and Symantec Altiris Client Management Suite deployment data • View an application's System Center 2012 Configuration Manager deployment status • Perform advanced ISO tag file creation, editing, and storage <hr/> <div data-bbox="527 718 786 785">Application Manager / Test Center Tab</div> <ul style="list-style-type: none"> • Perform tests in the following categories: <ul style="list-style-type: none"> • Windows Installer Internal Consistency Evaluators • Windows Installer Best Practices • Application Conflicts • Test and fix one package at a time <hr/> <div data-bbox="527 953 760 984">OS Snapshot Wizard</div> <ul style="list-style-type: none"> • Capture basic operating system configuration in an OS Snapshot, which can be imported into the Application Catalog to check for potential OS conflicts <hr/> <div data-bbox="527 1089 704 1121">QualityMonitor</div> <ul style="list-style-type: none"> • Perform Windows Installer testing, including testing in a locked down environment <hr/>

Table 1-2 • AdminStudio 2015 Full Editions (cont.)

Edition	Add On Pack	Tools	Functionality
Professional (Continued)	Application Virtualization Pack	<i>Same as Standard, plus:</i>	
		Enhancements to Application Manager / Catalog	<ul style="list-style-type: none"> • Import virtual packages into Application Catalog • View virtual package data in Application Manager • Manage System Center 2012 Configuration Manager deployment data for App-V 4.x and 5.0 packages • Manage Citrix XenApp Server deployment data for Citrix XenApp profiles and App-V 4.x packages • Manage Symantec Altiris Client Management Suite deployment data for Symantec Workspace and VMware ThinApp packages
		Enhancements to Application Manager / Test Center	<ul style="list-style-type: none"> • Test packages for compatibility to be virtualized to App-V, ThinApp, XenApp, and Symantec Workspace formats • Test App-V packages for best practices • Test App-V packages for conflicts with other packages
		Enhancements to Distribution Wizard	<ul style="list-style-type: none"> • Publish App-V packages to System Center Configuration Manager and Citrix XenApp Server • Publish Citrix XenApp profiles and App-V 4.x packages to Citrix XenApp Server • Publish Symantec Workspace and VMware ThinApp packages to Symantec Altiris Client Management Suite Server
	Application Compatibility Pack	Enhancements to Application Manager / Test Center	<ul style="list-style-type: none"> • Test packages for compatibility with the following operating systems: <ul style="list-style-type: none"> • Microsoft Windows 7 (32-bit and 64-bit) • Windows 8 (32-bit and 64-bit) • Windows Server 2008 R2 • Windows Server 2012 • On the Operating System Compatibility tab of the Test Center Deployment Type View, you can see detailed data for only the last package tested; for all other packages in the Application Catalog, this tab is blank (even if the package has been previously tested) • Ability to display Microsoft Application Compatibility Toolkit (ACT) database test results on ACT Summary tab of the Test Center Deployment Type View

Table 1-2 • AdminStudio 2015 Full Editions (cont.)

Edition	Add On Pack	Tools	Functionality
Professional (Continued)	Mobile Pack	Enhancements to Application Manager / Catalog	<ul style="list-style-type: none"> • Import of the following mobile app formats into the Application Catalog: <ul style="list-style-type: none"> • Apple iOS mobile apps (internal and public store) • Google Android mobile apps (internal and public store) • Microsoft Windows Store mobile apps • Ability to import iOS Enterprise Policy Configuration files, view their settings, and determine the policy compatibility of iOS mobile apps. • Ability to view iOS and Android mobile app reporting on feature use, device compatibility, and OS compatibility • Ability to view deployment data for Windows Store mobile apps, including detection methods and framework customizations • Ability to manage AirWatch Server deployment data for both Apple iOS and Google Android mobile apps (internal and public store)
		Enhancements to Distribution Wizard	<ul style="list-style-type: none"> • Ability to publish the following mobile app formats to System Center 2012 Configuration Manager R2 and AirWatch Server: <ul style="list-style-type: none"> • Apple iOS mobile apps (internal and public store) • Google Android mobile apps (internal and public store)

Table 1-2 • AdminStudio 2015 Full Editions (cont.)

Edition	Add On Pack	Tools	Functionality
Enterprise	<i>None</i>	<i>Same as Professional, plus:</i>	
		InstallShield 2015 (Premier Edition instead of Professional Edition)	<ul style="list-style-type: none"> Advanced customization of Windows Installer packages by either directly editing them or by creating transforms
		AdminStudio Virtual Desktop Assessment (Limited Edition)	<ul style="list-style-type: none"> Monitor the behavior of computers, users, and applications in your enterprise and gather data on the desktop environment In Test Center, perform testing to determine whether a Windows Installer package is a suitable candidate for conversion to a virtual desktop
		Application Manager / Report Center	<ul style="list-style-type: none"> Advanced reports including detailed summary and dashboard reports on Test Center test results, package data, and deployment information
		Platform API	<ul style="list-style-type: none"> Use to integrate your existing .NET applications or scripting environments like Microsoft PowerShell with AdminStudio
		Software Repository	<ul style="list-style-type: none"> Secure storage system for AdminStudio package data, including version management
		OS Security Patch Wizard	<ul style="list-style-type: none"> Import Windows OS patches for Windows 7, Windows 8.x, Windows Server 2012, and Windows Server 2012 R2 into the Application Catalog in order to test the impact they will have on your environment before they are deployed
		Report Center (Web Tool)	<ul style="list-style-type: none"> Generate reports on packages stored in the Application Catalog, including reports using custom SQL queries
		Security Console (Web Tool)	<ul style="list-style-type: none"> Manage AdminStudio user accounts and directory services Manage AdminStudio roles and permissions

Table 1-2 • AdminStudio 2015 Full Editions (cont.)

Edition	Add On Pack	Tools	Functionality
Enterprise (Continued)	Application Virtualization Pack	<i>Same as Professional, plus:</i>	
		Automated Application Converter (Multiple Application Version) Conversion Wizard (Multiple Application Version)	<ul style="list-style-type: none"> Ability to perform automated conversion of multiple packages at a time
		Enhancements to Application Manager / Report Center	<ul style="list-style-type: none"> Includes the Application Virtualization Compatibility Dashboard report Report Center's Application Readiness Dashboard includes an Application Virtualization Compatibility summary chart and App-V Best Practices and App-V Conflicts test results summary charts.
	Application Compatibility Pack	<i>Same as Professional, plus:</i>	
		Enhancements to Application Manager / Test Center	<ul style="list-style-type: none"> Ability to test and fix multiple packages or groups of packages simultaneously Ability to view package-level test details for Operating System Compatibility and Browser Compatibility tests for all packages in the Application Catalog, not just the last one tested Import of web applications into the Application Catalog Test web applications for compatibility with the following browsers: <ul style="list-style-type: none"> Internet Explorer 8 Internet Explorer 9 Internet Explorer 10 Internet Explorer 11
		Enhancements to Application Manager / Report Center	<ul style="list-style-type: none"> Display of Microsoft ACT database test results on the Report Center tab
		Enhancements to Platform API	<ul style="list-style-type: none"> Ability to use the Test-ASPackage and Resolve-ASPackage Platform API commands to perform batch package testing and issue resolution.
	Mobile Pack	<i>Same as Professional</i>	

AdminStudio Limited Editions

This section describes the tools and functionality available in AdminStudio's Limited Editions:

- [AdminStudio 2015 ZENworks Limited Edition](#)
- [AdminStudio 2015 Limited Edition for LANDesk Management Suite](#)
- [AdminStudio 2015 Symantec Limited Edition](#)

AdminStudio 2015 ZENworks Limited Edition

Information about the AdminStudio 2015 ZENworks Edition is presented in the following sections:

- [ZENworks Edition for ZENworks 10 and 11 Users](#)
- [ZENworks Server Connection Requirement](#)

ZENworks Edition for ZENworks 10 and 11 Users

The AdminStudio 2015 ZENworks Edition for Novell ZENworks Configuration Manager (ZCM) 10 and 11 customers includes all of the features of AdminStudio Standard Edition, the basic version of the AdminStudio solution. AdminStudio Standard Edition provides a cost-effective way for software packagers to migrate applications to Windows Installer. It enables control over MSI packaging, customization, and distribution activities, helping organizations rapidly and reliably package and deploy applications. For more information, see [Standard Edition](#).

ZENworks Server Connection Requirement

The first time you launch an AdminStudio ZENworks Edition tool, you will be prompted to log in to a ZENworks eDirectory server or a ZENworks Configuration Management server. After a successful login, you will not be prompted to login again.

AdminStudio 2015 Limited Edition for LANDesk Management Suite

Now available to users of the latest version of the LANDesk Management Suite, the AdminStudio Limited Edition for LANDesk Management Suite enables IT administrators to capture information about applications, customize those applications for their organization's needs, and hand off the prepared applications to the LANDesk Management Suite 8.8 for deployment.

AdminStudio helps LANDesk users to speed the delivery of applications to the organization's endpoints and better ensure the IT team is using a consistent process to deliver reliable Windows applications. The end result is reduced total cost of ownership for desktop management in the enterprise.



AdminStudio 2015 Limited Edition for LANDesk Management Suite is a customized version of AdminStudio that allows system administrators to rapidly prepare reliable Windows Installer (.msi) software packages for distribution across their enterprises. AdminStudio enables companies to take full advantage of the benefits of Windows Installer and reduces total cost of ownership by simplifying the installation, customization, and management of applications.

- [LANDesk Edition Components](#)
- [LANDesk Edition Customizations](#)
- [Evaluating AdminStudio Limited Edition for LANDesk Management Suite](#)

LANDesk Edition Components

AdminStudio 2015 LANDesk Edition includes the following AdminStudio tools:

Table 1-3 • AdminStudio 2015 LANDesk Edition Components

Tool	Description
Repackaging Wizard (Customized for LANDesk)	Use the Snapshot method of the Repackaging Wizard to repackage and convert LANDesk files into Windows Installer packages. 
Note • For more information, see Repackager Customizations .	
Distribution Wizard (Customized for LANDesk)	Use to deliver a final Windows Installer package (.msi) to the LANDesk Management Suite or to a network location, FTP server, or an administrative location. 
Note • For more information, see Distribution Wizard Customizations .	
Tuner	Use this full version of AdminStudio Tuner to amend, modify, or remove information from a Windows Installer package or transform, and to ensure that packages conform to Microsoft guidelines and organization-specific requirements.

LANDesk Edition Customizations

Additional information about the components available in AdminStudio 2015 Limited Edition for LANDesk Management Suite is presented in the following sections:

- [LANDesk Server Connection Requirement](#)
- [Repackager Customizations](#)
- [Distribution Wizard Customizations](#)
- [Application Catalogs](#)
- [Projects and Process Templates](#)

LANDesk Server Connection Requirement

The first time you launch an AdminStudio LANDesk Edition tool, you will be prompted to log in to a LANDesk Management Suite Server. After a successful login, you will not be prompted to login again.

Repackager Customizations

In the AdminStudio Limited Edition for LANDesk Management Suite, you can use the Repackaging Wizard's Snapshot method to repackage a legacy installation (.exe) and convert it to a Windows Installer package. This enables you to quickly and correctly capture system changes and data to help ensure the application or patch is customized for the enterprise's needs.

However, you need to upgrade to Standard Edition in order to use the Repackager interface to open and modify Repackager project files, convert other legacy installation types to a Repackager project, create an InstallShield Editor project (.ism), build an isolated Windows Installer package, or to configure the exclusions used when repackaging a legacy installation.



Note • Repackager projects (.irp) allow you to visually analyze the files, .ini files, shortcuts, and registry entries captured or changed during the conversion of a legacy setup into a Windows Installer package. You can also exclude files, shortcuts, registry entries, and .ini files from the resulting Windows Installer package, without affecting the original setup data.

Distribution Wizard Customizations

AdminStudio LANDesk Edition includes a customized version of the Distribution Wizard that enables you to distribute a package to a LANDesk server, as an administrative install, to an FTP location, or to a Network location.

Application Catalogs

LANDesk Edition users do not need access to AdminStudio Application Catalog databases. Therefore, in AdminStudio LANDesk Edition, you cannot connect to an Application Catalog or create a new Application Catalog.

Projects and Process Templates

Since the **Process Assistants** tab (formerly the **Projects** tab) and **Process Template Editor** (formerly the **Workflow Templates** tab) in the AdminStudio interface are used primarily to manage application migration projects, they are disabled in the LANDesk Edition.

Evaluating AdminStudio Limited Edition for LANDesk Management Suite

If you have AdminStudio Limited Edition for LANDesk Management Suite, you can choose to evaluate AdminStudio for 45 days (instead of the typical 21 days). Also, the set of tools available to you in evaluation mode depends upon the selection you made on the **Setup Type** panel during installation:

- **Typical**—If you chose this **Setup Type** option during installation, only the tools included in this Limited Edition were installed. Therefore, only those tools will be available to you during your evaluation period.
- **Custom**—If you chose this **Setup Type** option during installation, all of the AdminStudio Enterprise Edition client tools were installed. Therefore, all of those tools will be available to you during your evaluation period.


AdminStudio 2015 Symantec Limited Edition

AdminStudio 2015 Symantec Limited Edition enables IT administrators to capture information about applications, customize those applications for their organization's needs, and hand off the prepared applications to Symantec Altiris Management Server for deployment.

Symantec Limited Edition Components

AdminStudio 2015 Symantec Edition includes the following AdminStudio tools:

Table 1-4 • AdminStudio 2015 Symantec Edition Components

Tool	Description
Repackager	Use Repackaging Wizard to repackage and convert Symantec files into Windows Installer packages.
Legacy Distribution Wizard	Use to deliver a final Windows Installer package (.msi) to Symantec Altiris Management Server or to a network location, FTP server, or an administrative location.
WiseScript Editor	Use WiseScript Editor to automate administrative tasks and to create .exe files to use as custom actions in Windows Installer installations.
 Note • WiseScript Editor is installed separately.	

Symantec Altiris Management Server Connection Requirement

The first time you launch an AdminStudio 2015 Symantec Limited Edition tool, you will be prompted to log in to a Symantec Altiris Management Server. After a successful login, you will not be prompted to login again.

Contacting Us

You may contact us from anywhere in the world by visiting the our Web site at:

<http://www.flexerasoftware.com>

AdminStudio 2015 System Requirements

Before installing the AdminStudio client tools, review the following AdminStudio architecture diagram and the hardware and software requirements.

- [AdminStudio Architecture Diagram](#)
- [Hardware and Software Requirements](#)
- [Database Server Permissions](#)
- [Installing Internet Information Services \(IIS\)](#)
- [Port Requirements for Integration](#)

AdminStudio Architecture Diagram

While the AdminStudio client tools are usually installed on one machine, they interact with database servers, web tools, and other systems. The following architecture diagram illustrates how the components of AdminStudio Enterprise Edition Complete interact.



Figure 2-1: AdminStudio Architecture Diagram

This diagram includes the following components:

Table 2-1 • AdminStudio Architecture Diagram Components

Component	Description
AdminStudio Client	Machine where AdminStudio client tools are installed.
AdminStudio Enterprise Database	Microsoft SQL Server database server containing the AdminStudio Application Catalog/Workflow Manager database.

Table 2-1 • AdminStudio Architecture Diagram Components

Component	Description
Software Repository	Location on a file server where you can securely store not only installer packages, but also all of the files that are associated with those packages.
Workflow Manager Web Server	Server where Workflow Manager application is installed.
Workflow Manager File Server	Location where files that are uploaded to Workflow Manager are stored.
Active Directory Server	Enterprise Active Directory server.
SMTP Server	Enterprise email server.
Third Party Servers	AdminStudio can interact with Microsoft System Center Configuration Manager, Citrix XenApp Server, Novell ZENworks, LANDesk servers, Symantec Altiris Management Servers, and AirWatch Servers.



Note • For more information on AdminStudio editions, Virtualization Pack, Application Compatibility Pack, and Mobile Pack, see [AdminStudio Editions](#).

Hardware and Software Requirements

All of AdminStudio—Web sites, XML Web services, and database—can reside on a single machine; however, the configuration detailed in this section is recommended.



This section lists the requirements for AdminStudio client tool machine, Application Catalog database server, Web server, Software Repository server, and virtual machines.

- [AdminStudio Client Tool Machine](#)
- [Application Catalog Database Server](#)
- [AdminStudio Enterprise Server / Workflow Manager Server](#)
- [Software Repository](#)
- [Automated Application Converter Requirements](#)
- [Limited Edition Requirements](#)

AdminStudio Client Tool Machine

The following table lists the recommended system configuration for a machine running the AdminStudio client tools.


Table 2-2 • AdminStudio Client Tool Machine Requirements

Item	Description
Platform	32-bit or 64-bit processor at 2 GHz or greater  Note • All of the AdminStudio client tools run on 64-bit Windows operating systems. To repackage 64-bit applications or create 64-bit App-V packages, install AdminStudio on a 64-bit Windows operating system.
RAM	4 GB
Hard Disk	4.0 GB
Display	Designed for XGA at 1024 x 768 resolution or higher
Operating Systems	<ul style="list-style-type: none">• Windows 7• Windows 8 and Windows 8.1• Windows 10• Windows Server 2008 R2• Windows Server 2012 and Windows Server 2012 R2  Note • Support for Windows Vista was removed due to a modification made by Microsoft. For more information, see the following articles: <ul style="list-style-type: none">• An ADO application does not run on down-level operating systems after you recompile it on a computer that is running Windows 7 SP 1 or Windows Server 2008 R2 SP 1 or that has KB983246 installed [Microsoft Article 2517589]• A Better Solution for the Windows 7 SP1 ADO GUID Changes
Browser	Microsoft Internet Explorer 7.0 or later
Privileges	Administrative privileges on the system

Application Catalog Database Server

The following table lists the recommended system configuration for a database server to store AdminStudio Application Catalog databases.

Table 2-3 • Application Catalog Database Server Requirements

Item	Description
Platform	32-bit or 64-bit processor at 2 GHz or greater
RAM	4 GB or greater (8 GB preferred)
Hard Disk Space	80 GB or greater
Operating System	Windows Server 2008 R2 or later (Windows Server 2012 preferred)
Database Software	<p>SQL Server 2008 R2 or later databases, including SQL Server 2012 (latest version preferred).</p> <ul style="list-style-type: none"> SQL Server must be installed with case-insensitive dictionary sort order and ISO-8859-1 character set. (Use <i>sp_helpsort</i> T-SQL command for more information.) SQL_Latin1_General_CP1_CI_AS is the required collation setting for AdminStudio database server. It is the only supported collation.
 <p>Note • Before attempting to connect to an existing Microsoft SQL Server, open SQL Server Configuration Manager and make sure that the following three protocols are enabled:</p> <ul style="list-style-type: none"> Shared Memory Named Pipes TCP/IP 	

Distribution Systems


Application Distribution

AdminStudio supports the following distribution systems for the distribution of applications.

Table 2-4 • Distribution Systems

Distribution System	Support Version(s)
System Center Configuration Manager	2007 and 2012 R2
Symantec Altiris Client Management Suite	7.5

Table 2-4 • Distribution Systems

Distribution System	Support Version(s)
Citrix XenApp Server	6.5
AirWatch Server	6.5 [Mobile applications only]
Microsoft App-V Server	5.0
 Note • In order for you to distribute packages to a Microsoft App-V Server, the WinRM service must be running, and the App-V Server must be in the list of trusted hosts. Both of these can be accomplished from PowerShell by running the following command: set-item wsman:\localhost\Client\TrustedHosts -value <Machine Name>	

Package Distribution


AdminStudio supports the following distribution systems for the distribution of packages using the Legacy Distribution Wizard.

Distribution System	Supported Versions
Altiris Notification Server	Version 6.5
LanDesk	9
Novell ZENworks Configuration Management	Versions 10 and 11
Microsoft System Center Configuration Manager	2007 and 2012

AdminStudio Enterprise Server / Workflow Manager Server

The following table lists the system requirements for the Web server that hosts the Workflow Manager Data Web service and the actual Workflow Manager Web site and/or AdminStudio Enterprise Server:

Table 2-5 • AdminStudio Enterprise Server / Workflow Manager Server Requirements

Item	Description
Platform	32-bit or 64-bit processor at 2 GHz or greater  Note • AdminStudio Enterprise Server / Workflow Manager runs in 32-bit mode on a 64-bit OS.
RAM	4 GB or greater (8 GB preferred)
Hard Disk Space	100 GB or greater
Operating System	Windows Server 2008 R2 or later / English base language (Windows Server 2012 preferred)
IIS	IIS 7.0 or later
.NET	.NET Framework 4.0
MSXML	MSXML 4.0

Software Repository

The following tables lists the recommended system configuration for the machine that stores the Software Repository files.

Table 2-6 • Software Repository Requirements

Item	Description
Processor	1 GHz or greater
RAM	2 GB or greater
Hard Disk Space	500 GB or greater
Operating System	Windows 8, Windows 7, Windows Vista, or Windows Server 2008 or later

Automated Application Converter Requirements

This section lists the requirements for the virtual machines used by Automated Application Converter to perform repackaging. Also, the software requirements for specific virtual technologies are listed.

- [Virtual Machine Requirements](#)
- [Virtual Technology Requirements](#)

Virtual Machine Requirements



Edition • Automated Application Converter is included in the AdminStudio Application Virtualization Pack.

Automated Application Converter performs automated repackaging on virtual machines. This section lists the virtual machine platform and virtual machine image system requirements.

- [Supported Virtual Machine Platforms](#)
- [VMware Requirements](#)
- [Microsoft Hyper-V Server Requirements](#)
- [Virtual Machine Image Requirements](#)

Supported Virtual Machine Platforms

The Automated Application Converter supports automated repackaging on virtual machines from the following platforms:

- VMware ESX/ESXi Server, Version 3.5 Update 3 or later
- VMware Workstation 6.5 or later
- Microsoft Hyper-V Server 2008 R2 or later

VMware Requirements

As described above, Automated Application Converter supports automated repackaging on VMware ESX/ESXi Server and VMware Workstation.

- [VMware VIX API Requirement](#)
- [VMware ESX/ESXi Server Permission Requirements](#)

VMware VIX API Requirement

In order for Automated Application Converter to perform automated repackaging, it needs to communicate with the virtualization technology that you are using. If you are using VMware virtualization technology (VMware ESX or ESXi Server or a local VMware Workstation), the VMware VIX API needs to be installed on the same machine as the Automated Application Converter. You can do this by either installing VMware Workstation on that machine or by downloading and installing the VMware VIX API from the following location:

<http://www.vmware.com/support/developer/vix-api>



Note • When using VMware Workstation, it is recommended that you install VMware Workstation on the same machine as Automated Application Converter so that Automated Application Converter will use the version of the VIX API that was designed for that specific version of VMware Workstation. Although it is likely that newer versions of the VIX API will also work, it seems that the best approach is for Automated Application Converter to use the version of the VIX API that was bundled with your version of VMware Workstation.

VMware ESX/ESXi Server Permission Requirements

If you plan to use a VMware ESX/ESXi Server in conjunction with Automated Application Converter, make sure that the account that you use to log in to this server has the permissions/roles needed to automatically open a VM using VMware VIX API. The account needs to either have an administrator role assigned or, at least, have the following three roles assigned:

- All Privileges/Virtual Machine/State/Create Snapshot
- All Privileges/Virtual Machine/State/Delete Snapshot
- All Privileges/Virtual Machine/Interaction/Console Interaction

If the login account does not have these permissions/roles, Automated Application Converter will be unable to automatically boot up a virtual machine on that server.

Microsoft Hyper-V Server Requirements

As described above, Automated Application Converter supports automated repackaging on Microsoft Hyper-V Server. When preparing a Hyper-V Server for use with Automated Application Converter, make sure that the following conditions are met:

- **Configuration tools**—Verify that the Hyper-V configuration tools are installed on the Hyper-V server machine. These tools can be installed using the Microsoft Hyper-V Management Console.
- **Connection**—Verify that you can successfully connect to the Hyper-V Server from the machine where AdminStudio Automated Application Converter is installed.
- **Permissions**—Make sure that the Hyper-V Server user has the following permissions to perform operations on the Hyper-V machines:
 - Permission to create/restore/delete VM snapshots
 - Permission to start and stop virtual machines
 - Permission to access console sessions
- **Configuration settings**—Connecting to a WMI namespace on a remote computer running Windows Vista or Windows Server 2008 may require changes to configuration settings. Check the following configuration settings on the AdminStudio machine as well as on the Hyper-V Server machine:
 - Windows Firewall Settings
 - User Account Control (UAC) Settings
 - DCOM Settings
 - Common Information Model Object Manager (CIMOM) Settings

For detailed information, see [Connecting to WMI Remotely](#) at:

[http://msdn.microsoft.com/en-us/library/aa822854\(VS.85\).aspx](http://msdn.microsoft.com/en-us/library/aa822854(VS.85).aspx)

Virtual Machine Image Requirements

Automated Application Converter uses virtual machines to perform automated repackaging. These virtual machines have the following requirements:

Virtual Machine System Requirements

When creating a virtual machine image that will be hosted on one of the virtual machine platforms listed above, the recommended minimum requirements should meet those required by the applications you are trying to repackage. Since you repackage on the target deployment platform, the virtual machine image should closely resemble the target deployment environment.

Preparing Your Virtual Machines for Use With the Automated Application Converter

You need to prepare each virtual machine that you are going to use with the Automated Application Converter to perform automated repackaging by running the Virtual Machine Preparation setup and by creating a snapshot. For instructions, see [Preparing Your Virtual Machines for Use With the Automated Application Converter](#).

Virtual Technology Requirements

In order to convert to some virtual formats, there are some software requirements:

Table 2-7 • Virtual Technology Requirements

Virtual Format	Requirement
App-V 5.0	<ul style="list-style-type: none"> • Conversion—To convert a package to App-V 5.0 format using Automated Application Converter's App-V 5.x with Sequencer method, the Microsoft Application Virtualization 5.0 Sequencer must be installed on the virtual machine where the conversion will take place. • Upgrade—To upgrade an imported App-V 4.x package to App-V 5.0 format directly from Application Manager using the App-V Upgrade Wizard, the Microsoft Application Virtualization 5.0 Sequencer must be installed on the same machine as AdminStudio. • Testing—To test an App-V package using Automated Application Converter, the Microsoft Application Virtualization 5.0 Client must be installed on the same machine as AdminStudio.
VMware ThinApp	To convert a package to VMware ThinApp format, VMware ThinApp must be installed on the same machine as AdminStudio, and all license agreements must have been accepted.
Symantec Workspace	To convert a package to a Symantec Workspace virtual package, the Symantec Workspace Virtualization Agent must be installed on the same machine as AdminStudio.

Limited Edition Requirements

The AdminStudio Limited Editions have the following additional requirements:

- [ZENworks Edition Requirement: Connection to a ZENworks Server](#)
- [Limited Edition for LANDesk Management Suite Requirement: Connection to a LANDesk Server](#)
- [Symantec Limited Edition Requirement: Connection to a Symantec Altiris Management Server](#)

ZENworks Edition Requirement: Connection to a ZENworks Server

To use AdminStudio ZENworks Edition, you must be able to connect to a ZENworks server. The first time you launch one of the AdminStudio tools, you will be prompted to enter the login credentials to a ZENworks server. After you successfully connect to that server, you will not be required to enter this information again.



Note • For more information, see [Activating AdminStudio ZENworks Edition](#).

Limited Edition for LANDesk Management Suite Requirement: Connection to a LANDesk Server

The AdminStudio Limited Edition for LANDesk Management Suite can only be used when the LANDesk Management Suite is already installed. The first time you launch an AdminStudio LANDesk Edition tool, you will be prompted to log in to a LANDesk Management Suite Server. After a successful login, you will not be prompted to login again.

Symantec Limited Edition Requirement: Connection to a Symantec Altiris Management Server

The AdminStudio Symantec Limited Edition can only be used when a Symantec Altiris Management Server is already installed. The first time you launch an AdminStudio Symantec Limited Edition tool, you will be prompted to log in to a Symantec Altiris Management Server. After a successful login, you will not be prompted to login again.

Database Server Permissions

In order to operate some AdminStudio tools, AdminStudio users require specific database permissions. Depending upon the type of user, you may wish to be more selective in the permissions you assign to these users.

If you have AdminStudio Enterprise Edition, you can assign permissions to individual users using the Role functionality in AdminStudio Enterprise Server, as described in *AdminStudio and Workflow Manager Roles and Permissions* in the AdminStudio Help Library. Otherwise, you can provide more selective restrictions at the database server level using the information in the following table, AdminStudio Database Server Permissions.

Every AdminStudio user will need at a minimum read privilege to every table in the Application Catalog. The minimum permissions are described below, based upon the type of operation you want the user to perform.

Table 2-8 • AdminStudio Database Server Permissions

Type	Description
General User Administrative Process	<p>General administrative processes cover a range of activities such as adding groups, moving packages around, adding comments, updating extending attributes, etc. For example, these tables include cstblPackage, cstblGroups, and cstblGroupPackages. Any Application Catalog table which is not referenced explicitly in the discussion for the other AdminStudio processes should be considered a general user administrative table.</p> <p>Most AdminStudio users should have write access to these tables.</p>
Import Process	<p>The user importing MSI packages, merge modules, or just about anything will require write access to a significant set of Application Catalog tables depending on the type of import. For example:</p> <ul style="list-style-type: none">• MSI package file—For MSI package file import operations, those Application Catalog tables with a csmsi prefix are populated.• Merge modules—For merge module import operations, the csmsm prefixed tables are used.• Patches—For patch import operations, the cspch prefix tables are used.• OS snapshots—For OS snapshot import operations, the osc prefix tables are used. <p>Occasionally, the Import process will need to create new tables in the Application Catalog to support the import of custom table data. Either the necessary server privileges need to be given for these users, or the import of custom table data needs to be disabled within the Application Manager Options dialog box.</p>
Validation Process	<p>For this process, the user will need to be able to write entries into the cstblValidationResults and cstblValidationConfiguration tables.</p>
Dependency Scanning Process	<p>For this process, the user will need to be able to write entries into the cstblPackageExeDependencies table.</p>

Table 2-8 • AdminStudio Database Server Permissions (cont.)

Type	Description
Conflict Detection and Resolution Process	For this process, the user will need to be able to write entries into the cstblConflict prefixed table names.
Patch Impact Analysis Process	For this process, the user will need to be able to write entries into the cstblPatchConflict prefixed table names. This process will create and delete some temporary tables and, as such, the user performing this process should have the necessary server privileges to perform these operations.
Package Auto Import Process	<p>The Package Auto Import process will ultimately generate a series of Import operations, and so the user performing these operations should have the Import process rights described above.</p> <p>If the user wants to edit these operations in the Wizard, then they will need write accession to the cstblSubscribed prefixed tables.</p>
Workflow Operations Process	For this process, the user will need to be able to write entries into the wftbl prefixed table names.
Tools Properties Operations	For this process, the user will need to be able to write entries into the wftblTools table name.
Pre-Deployment Testing	For this process, the user will need to be able to write entries into the pdt prefixed table names.



Note • A number of processes within AdminStudio generate data which can subsequently be deleted by the AdminStudio user. Any discussion of the minimum privileges required for a specific AdminStudio process will also imply the privileges to delete this same data.

Installing Internet Information Services (IIS)

Internet Information Services (IIS) is required to be installed on the machine on which you are installing AdminStudio Enterprise Server / Workflow Manager.

To install IIS on a Windows Server 2008 R2 machine, perform the following steps.



Task:

To install IIS, perform the following steps:

1. Open **Server Manager**.
2. In the tree, select **Roles**.
3. Click **Add Roles**. The **Before You Begin** panel of the **Add Roles Wizard** opens.
4. Click **Next**. The **Select Server Roles** panel opens.
5. Select **Application Server**. You will be prompted to **Add features required for Application Server?**
6. Click **Add Required Features**.
7. Back on the **Select Server Roles** panel, select **Web Server (IIS)**.
8. Click **Next**. The **Application Server** panel opens.
9. Click **Next**. The **Select Role Services** panel opens.
10. Select **Web Server (IIS) Support**. You will be prompted to **Add role services and features required for Web Server (IIS) Support?**
11. Click **Add Required Role Services**.
12. Back on the **Select Role Services** panel, click **Next**. The **Web Server (IIS)** panel opens.
13. Click **Next**. The **Select Role Services** panel opens.
14. Select **IIS 6 Management Compatibility** (and all of its subentries).
15. Click **Next**. The **Confirm Installation Selections** panel opens.
16. Click **Install**. The **Installation Progress** panel opens. When installation is complete, the **Installation Results** panel opens.
17. Click **Close**. You are now ready to run the Workflow Manager / AdminStudio Enterprise Server installer.

Port Requirements for Integration

If you are configuring an integrated solution between AdminStudio, FlexNet Manager Platform, App Portal, and Workflow Manager, you need to open certain ports on firewalls between the products to enable them to communicate with each other. This section serves as a reference for the ports that the products use, and it can be used as a basis for configuring firewall rules.

Table 2-9 • Port Requirements for Integration

Target Program	Originating Program(s)	Target Program Uses These Ports
Active Directory	AdminStudio	See the following article in the Microsoft TechNet Library: Active Directory and Active Directory Domain Services Port Requirements at http://technet.microsoft.com/en-us/library/dd772723(v=WS.10).aspx
	App Portal	
	Workflow Manager	
	Flexera Service Gateway	
	FlexNet Manager Platform	
App Portal	AdminStudio	80
Flexera Service Gateway	AdminStudio	9443
	App Portal	8280
	Workflow Manager	
	FlexNet Manager Platform	
FlexNet Manager Platform	AdminStudio	80
	App Portal	443
		8889

Table 2-9 • Port Requirements for Integration (cont.)



Target Program	Originating Program(s)	Target Program Uses These Ports
System Center Configuration Manager	AdminStudio	9 (Wake on LAN)
	App Portal	67, 68 (DHCP)
		69 (TFTP)
		80 (HTTP)
		135 (RPC)
		389 (LDAP)
		443 (HTTPS)
		445 (Server Message Block, SMB)
		636 (LDAP SSL)
		2701 (Remote Control)
		3268 (LDAP Global Catalog)
		3269 (LDAP Global Catalog SSL)
		3389 (Remote Assistance)
		4011 (BINL)
		5985 (Windows Remote Management HTTP)
		5986 (Windows Remote Management HTTPS)
		8530, 8531 (HTTP and HTTPS)
		10123 (Client Notification)
		16993 (Power control, provisioning, and discovery)
		16995 (Serial over LAN and IDE redirection)
		25536 (Wake-up proxy)
 <p>Note • For more information, see the following article in the Microsoft TechNet Library: Technical Reference for Ports Used in Configuration Manager at http://technet.microsoft.com/en-us/library/hh427328.aspx</p>		
SCCM File Share Server	AdminStudio	445 (Server Message Block, SMB)

Table 2-9 • Port Requirements for Integration (cont.)

Target Program	Originating Program(s)	Target Program Uses These Ports
SMTP Server	AdminStudio	25
	Workflow Manager	
	Flexera Service Gateway	
	FlexNet Manager Platform	
SQL Server	AdminStudio	1433 (SQL Server Service)
	App Portal	1434 (SQL Server Browser)
	Workflow Manager	4022 (SQL Server Service Broker)
	FlexNet Manager Platform	
		Note • If SQL Server is configured to listen on an alternate port, make sure the firewall allows communication on that port.
Workflow Manager	AdminStudio	80

Installing AdminStudio 2015

Instructions for installing AdminStudio is presented in the following sections:

Table 3-1 • Installing AdminStudio

Topic	Description
Installing the AdminStudio Client Tools	Explains how to install the AdminStudio client tools using the installation wizard and also how to install it via command line.
Upgrading an Existing Application Catalog to AdminStudio 2015	Explains how to upgrade an existing Application Catalog to AdminStudio 2015 using either the AdminStudio user interface or by using scripts.

Installing the AdminStudio Client Tools

You can install AdminStudio 2015 either by using the installation wizard or silently via command line.

- [Installing AdminStudio Using the Installation Wizard](#)
- [Installing AdminStudio Silently Via Command Line](#)

Installing AdminStudio Using the Installation Wizard

To install the AdminStudio client tools using the installation wizard, perform the following steps.

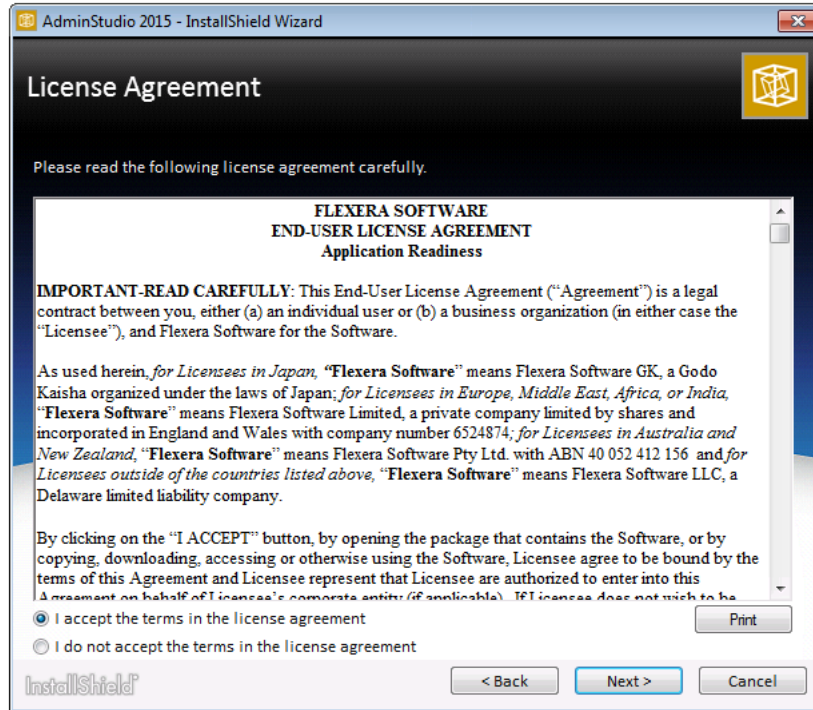


Task: *To install the AdminStudio client tools:*

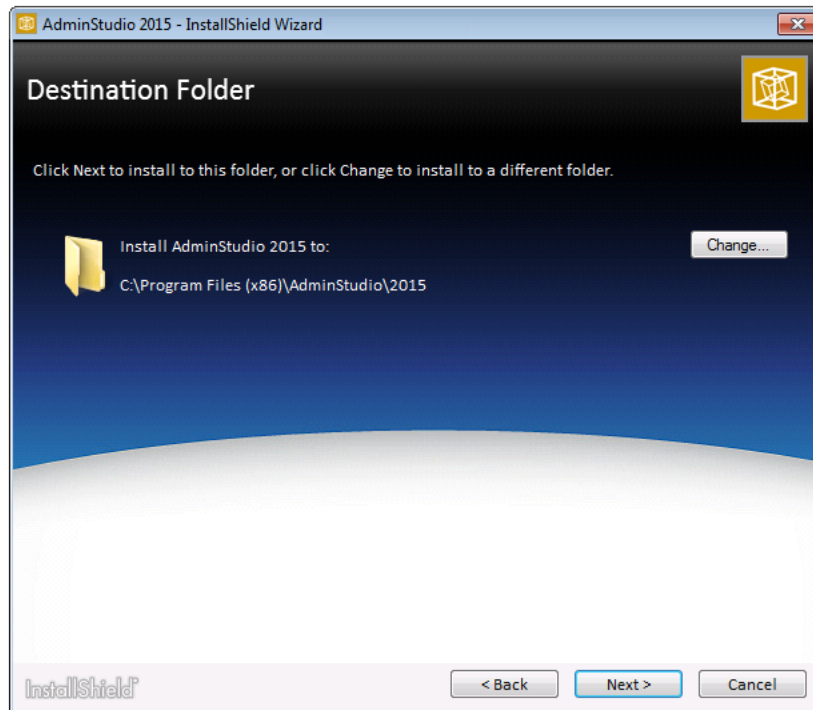
1. Launch the AdminStudio installation program. The **Welcome** panel opens.



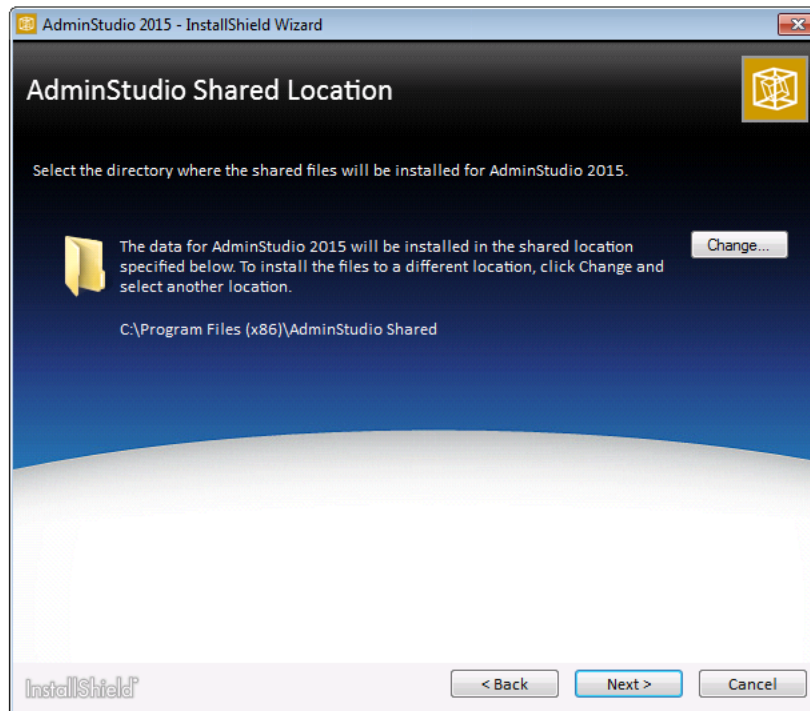
2. Click **Next**. The **License Agreement** panel opens.



3. Select the **I accept the terms in the license agreement** option and click **Next**. The **Destination Folder** panel opens.



4. If you want to install AdminStudio in the specified directory, click **Next**. If you want to select a different directory, click **Change**, select a new directory, and then click **Next**. The **AdminStudio Shared Location** panel opens.

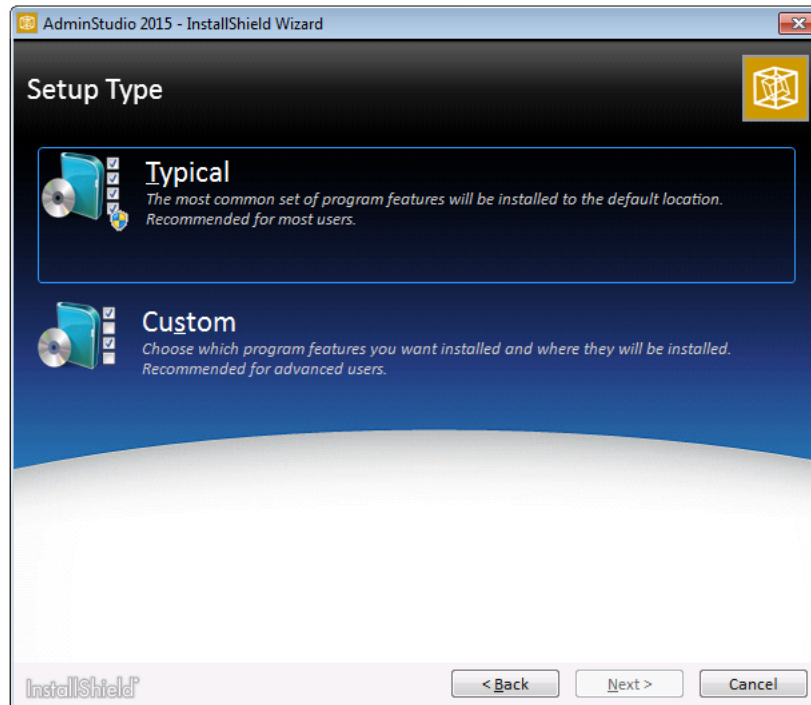


The AdminStudio shared directory contains shared information for repackaging, best practices testing, conflict identification, and other AdminStudio functions, including the following:

- The shared AdminStudio.ini file, which specifies default Application Catalog database settings
- Application Manager duplicate package identifier options
- Repackager isrepackager.ini exclusion list
- OS Snapshot issnapshot.ini file
- User-defined ACE rules
- Distribution Wizard Distribution Type templates and .ini files

If you are working in a team environment, the AdminStudio shared directory should be set to a centralized network location, accessible by all AdminStudio users at your organization, rather than on your local machine.

5. Specify the location of your organization's AdminStudio shared directory, and click **Next**. The **Setup Type** panel opens.



6. Select one of the following options to specify which components you want to install on this machine:
 - **Typical**—Select this option to install all client tool program features of AdminStudio including InstallShield Editor.
 - **Custom**—Select this option if you want to open an additional panel where you can select whether you want to install just the AdminStudio client tools or just InstallShield Editor.
7. Do one of the following:
 - **If you clicked Typical in the previous step**, the **Installing AdminStudio 2015** panel opens and installation begins. Skip to [Step 8](#).
 - **If you selected Custom**, click **Next** and continue with [Step 8](#). The **Custom Setup** panel opens, listing two options:
 - **AdminStudio Client and Tools**—Installs the AdminStudio user interface and client tools, such as Repackager, Application Manager, and Distribution Wizard.
 - **InstallShield Editor**—Installs InstallShield Editor.
8. Click one of the two options. The **Installing AdminStudio 2015** panel opens and the installation process begins.
9. When installation is complete, the **Completed** panel opens. Click **Finish** to exit the wizard.
10. Proceed with one of the following:
 - [Activating AdminStudio \(Full Edition\) Upon Initial Startup](#)
 - [Evaluating AdminStudio Enterprise Edition Client Tools](#)



Note • When you launch AdminStudio for the first time, you may be prompted to install the AdminStudio Service Packs. Follow the prompts to install all recommended Service Packs.

Installing AdminStudio Silently Via Command Line

The AdminStudio installer was created using an InstallShield “Suite” project type, which means that the procedure for installing AdminStudio silently is different from previous releases, which were created using a “Basic MSI” project type.

To install AdminStudio 2015 silently, you need to use the `ASCommandLine` property to pass standard MSI parameters to the AdminStudio installer (`AdminStudio2015.exe`), along with the `/silent` switch:

```
AdminStudio2015.exe /silent ASCommandLine="[Parameters]"
```

For example:

```
AdminStudio2015.exe /silent ASCommandLine="TRANSFORMS=MyTransform.mst"
```

The AdminStudio installer uses the following command line parameters:

Table 3-2 • AdminStudio Installer Command Line Parameters

Parameter	Description
ASCommandLine	Use to pass any MSI property (except for <code>ISInstallDir</code> , <code>SharedInstallDir</code> , or <code>PRODUCTID</code>) to the AdminStudio installer. Below are examples: <code>AdminStudio2015.exe /silent ASCommandLine="TRANSFORMS=MyTransform.mst"</code>
ISCommandLine	Use to pass any MSI property to the InstallShield Editor installer (which is automatically launched during AdminStudio installation). Using this parameter enables you to install InstallShield Editor in a different directory than AdminStudio. For example: <code>AdminStudio2015.exe /silent ISCommandLine="INSTALLDIR=D:\MyISDirectory"</code>
ISInstallDir	Use to specify the AdminStudio installation directory: <code>AdminStudio2015.exe /silent ISInstallDir="C:\Program Files\MyInstallLocation"</code>
SharedInstallDir	Use to specify the AdminStudio Shared directory: <code>AdminStudio2015.exe /silent SharedInstallDir="\\netshare18\MySharedLocation"</code>
PRODUCTID	Use to specify the AdminStudio serial number: <code>AdminStudio2015.exe /silent PRODUCTID="xxxx-xxxx-xxxx-xxxx"</code>
/silent	In order to install AdminStudio silently, you must use <code>/silent</code> switch: <code>AdminStudio2015.exe /silent</code>

Upgrading an Existing Application Catalog to AdminStudio 2015

Upgrading an existing Application Catalog to AdminStudio 2015 is a two step process. You first need to use the user interface or run scripts to upgrade the database. Then you need to change the Application Catalog database's collation setting to `SQL_Latin1_General_CP1_CI_AS`.

- [Upgrading an Application Catalog](#)
- [Changing the Database Collation of the Upgraded Application Catalog](#)

Upgrading an Application Catalog

You can upgrade an existing Application Catalog to AdminStudio 2015 either by opening it in the AdminStudio user interface or by running scripts.

- [Upgrading an Application Catalog Using the User Interface](#)
- [Upgrading an Application Catalog Using Scripts](#)

Upgrading an Application Catalog Using the User Interface

When you attempt to open an AdminStudio 5.x or later SQL Server Application Catalog in the AdminStudio 2015 client tools interface, you are prompted to upgrade the Application Catalog to the latest AdminStudio schema. This section explains this procedure.



Important • Before you upgrade the Application Catalog database from a previous AdminStudio version, it is strongly recommended that you create a backup of the original database. This is a standard precaution that is recommended to prevent possible data loss. If you are using the Application Catalog Software Repository feature, you may also want to make a backup copy of your Software Repository directories before upgrading.

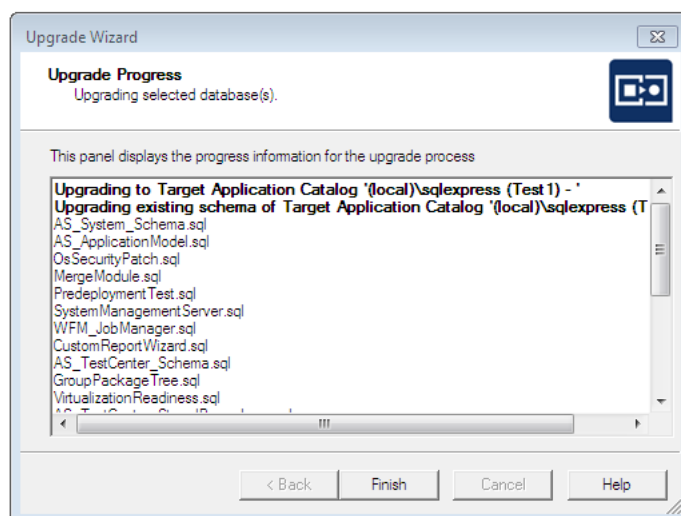


Task:

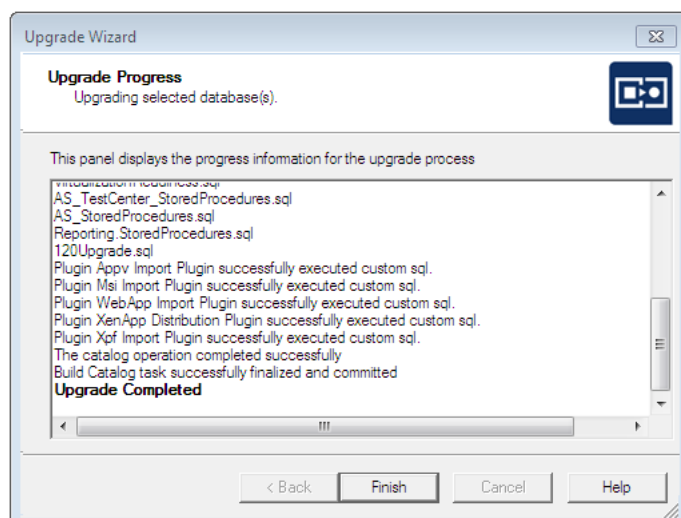
To upgrade an existing Application Catalog:

1. Install the AdminStudio client tools, as described in [Installing the AdminStudio Client Tools](#).
2. Launch Application Manager.
3. On the Application Manager tab menu, select **Connect**. The **Connect Application Catalog** dialog box opens.
4. Open the **Standalone** tab. The **Standalone** tab opens, prompting you to enter database connection information.

5. If you want this Application Catalog to be the default shared Application Catalog used in your organization, select the corresponding option at the bottom of the dialog box.
6. Select the **Server** where the Application Catalog is stored.
7. Specify how the database server should verify the authenticity of the login—either using **Windows Authentication** or **Server Authentication**. If you selected **Server Authentication**, enter the appropriate **Login ID** and **Password**.
8. In the **Catalog** box, enter the name of the Application Catalog you want to open.
9. Click **Test** to test the connection to the database.
10. Click **OK**. A message opens stating that the Application Catalog needs to be upgraded, and asking **Do you want to upgrade now?**
11. Click **Yes**. The **Welcome** panel of the Upgrade Wizard opens.
12. Click **Next**. The **Upgrade Progress** panel opens and the upgrade begins.



When the upgrade is complete, the message **Upgrade Completed** is listed, and the **Finish** button is enabled.



13. Click **Finish**. The upgrade is now complete and all of your Application Catalog data has been preserved.



Note • When an SQL Server Application Catalog database is upgraded, the old tables are not dropped from the Application Catalog.

Upgrading an Application Catalog Using Scripts

Rather than opening an Application Catalog in the AdminStudio user interface, you can use scripts to upgrade an existing database.



Task: *To upgrade an existing Application Catalog database:*

1. Open up the CSSYSSCHEMAINFO table.
2. Determine the value of the target attribute of the upgrade element.
3. Run the script(s) listed for the target value found and all of the scripts for subsequent versions, in order.

For example, if your CSSYSSCHEMAINFO table's target attribute of the upgrade element is 13286589, first run 80VP1Upgrade.sql and CustomReportWizard.SQL, and then run all of the scripts listed for subsequent versions:

Schema Version You are Upgrading To	Target	Database Type	Scripts to Run to Upgrade to Listed Version
4.99 5.00	13286574 13286580	SQL Server	AS50VP1Upgrade.SQL PIM_SQLServer.sql
5.00 VP1	13286584	SQL Server	Upgrade50vp1to55.SQL SMSSchema.SQL
5.5	13286586	SQL Server	SMSSchema.SQL PIM_SQLServer.sql PreDeployTest.sql 60Upgrade.sql
6.0	13286587	SQL Server	70Upgrade.sql
7.0	13286588	SQL Server	StoredProcedure_Cleanup.sql SMSSchema.SQL 80ReconcileSchema.sql 80Upgrade.sql
8.0	13286589	SQL Server	80VP1Upgrade.sql CustomReportWizard.SQL
9.x	13286590	SQL Server	80VP1Upgrade.sql 901Upgrade.sql
10.0	13286593	SQL Server	1001Upgrade.sql ReportingSPs.1001Upgrade.sql
10.01	13286594	SQL Server	110Upgrade.sql ReportingSPs.110Upgrade.sql WFM_SampleTemplates.sql

Schema Version You are Upgrading To	Target	Database Type	Scripts to Run to Upgrade to Listed Version
11.0	13286595	SQL Server	WFM_SampleTemplatesSHLDNPLS.sql 110UpgradeSHLDNPLS.sql ReportingSPS.110UpgradeSHLDNPLS.sql
11.x	13286596	SQL Server	115UpgradeBAZINGA.sql
11.x	13286597	SQL Server	115Upgrade.sql ReportingSPS.115Upgrade.sql
11.50	13286598	SQL Server	ValidateCollation.sql 116Upgrade.sql Reporting.StoredProcedures.sql 116UpgradeBAZINGA.sql
11.60	13286599	SQL Server	ValidateCollation.sql 120UpgradeDALI.sql
11.60	13286600	SQL Server	ValidateCollation.sql 117Upgrade.sql ApplicationExtendedAttributes.sql
11.70	13286601	SQL Server	ValidateCollation.sql AS_System_Schema.sql AS_ApplicationModel.sql OsSecurityPatch.sql MergeModule.sql PredeploymentTest.sql SystemManagementServer.sql WFM_JobManager.sql CustomReportWizard.sql AS_TestCenter_Schema.sql GroupPackageTree.sql VirtualizationReadiness.sql AS_TestCenter_StoredProcedures.sql AS_StoredProcedures.sql Reporting.StoredProcedures.sql 120Upgrade.sql
12.00	13286602	SQL Server	1201Upgrade.sql
12.01	13286603	SQL Server	DarwinFixes.sql 1202Upgrade.sql 1202UpgradewFM.sql 1202UpgradewFMEmailTemplate1.sql 1202UpgradewFMEmailTemplate2.sql

Schema Version You are Upgrading To	Target	Database Type	Scripts to Run to Upgrade to Listed Version
12.02	13286605	SQL Server	AS_System_Schema.sql AS_ApplicationModel.sql OsSecurityPatch.sql MergeModule.sql PredeploymentTest.sql SystemManagementServer.sql WFM_JobManager.sql AS_TestCenter_Schema.sql CustomReportWizard.sql AS_StoredProcedures.sql VirtualizationReadiness.sql GroupPackageTree.sql AS_TestCenter_StoredProcedures.sql Reporting.StoredProcedures.sql ApplicationExtendedAttributes.sql MobileTables.sql MobileProgrammability.sql 1300Upgrade.sql MobileSeedDataEUCLID.sql 1301UpgradewFM.sql 1302UpgradewFM.SQL You also need to run any SQL scripts that are found in the common\Plugins directory. The following plug-in scripts are shipped with the product: Airwatch.sql Altiris.sql AppV.sql AppvServer.sql Msi.sql XenApp.sql Xpf.sql

Schema Version You are Upgrading To	Target	Database Type	Scripts to Run to Upgrade to Listed Version
13.00	13286607	SQL Server	AS_System_Schema.sql AS_ApplicationModel.sql OsSecurityPatch.sql MergeModule.sql PredeploymentTest.sql SystemManagementServer.sql WFM_JobManager.sql AS_TestCenter_Schema.sql CustomReportWizard.sql AS_StoredProcedures.sql VirtualizationReadiness.sql AS_UI_Support.sql GroupPackageTree.sql AS_TestCenter_StoredProcedures.sql Reporting.StoredProcedures.sql ApplicationExtendedAttributes.sql MobileTables.sql MobileProgrammability.sql 1400Upgrade.sql DARSchemaUpdate.sql You also need to run any SQL scripts that are found in the Common\Plugins directory. The following plug-in scripts are shipped with the product: Airwatch.sql Altiris.sql Appv.sql AppvServer.sql Msi.sql XenApp.sql Xpf.sql



Note • For AdminStudio Upgrade target values of 1328657 (Version 3.01) and 13286572 (Version 3.5), use the LegacyUpgradewizard.exe.

Changing the Database Collation of the Upgraded Application Catalog

Generally, an Application Catalog database obtains its collation setting from the SQL Server collation setting, unless one specifies a different collation setting. Therefore, if an SQL Server is running with the collation setting of Latin1_General_CI_AS, then any database created on this SQL Server will have the collation setting of Latin1_General_CI_AS by default.

However, AdminStudio 2015 requires the database collation to be SQL_Latin1_General_CP1_CI_AS. If a new Application Catalog is created using AdminStudio 2015, that Application Catalog database is created with the correct collation setting, irrespective of the SQL Server collation setting. However, if you upgrade an Application Catalog database from a previous version to the AdminStudio 2015 schema using the Upgrade Wizard or using scripts, the collation setting is not changed, so you must perform the steps below to change it.



Note • In the United States, the default collation for any SQL Server is SQL_Latin1_General_CP1_CI_AS. However, in other geographies such as the United Kingdom and Europe, the default collation is set to something else. Therefore, this topic is more relevant to users located in geographies outside of the United States.



Important • If the collation setting of an AdminStudio 2015 Application Catalog is not set to the correct collation setting, you will be able to connect to it, but it will cause Application Manager to periodically crash. An error message such as the following will appear in the log file (ISCMIDE.log):

```
'Exception 'System.Data.SqlClient.SqlException (0x80131904): Cannot resolve the collation conflict between "Latin1_General_CI_AS" and "SQL_Latin1_General_CP1_CI_AS" in the equal to operation.'
```

To change the collation setting of an AdminStudio 2015 Application Catalog database to SQL_Latin1_General_CP1_CI_AS, perform the following steps:



Task:

To change the collation setting of an AdminStudio 2015 Application Catalog database:

1. Download the following ZIP file and extract the files to a temporary folder:
<http://helpnet.flexerasoftware.com/adminstudio2015/CollationChange.zip>
2. Open SQL Management Studio and run the Pre_Collation_Change.sql file against the AdminStudio 2015 Application Catalog database.
3. Open the Collation_Change.sql file in an editor and replace the AS_DATABASE_NAME string with the name of the Application Catalog database that you are upgrading.
4. Run the Collation_Change.sql file against the AdminStudio 2015 Application Catalog database.
5. Run the Post_Collation_Change.sql file against the AdminStudio 2015 Application Catalog database.

The collation setting of the AdminStudio 2015 Application Catalog database will now have been changed to SQL_Latin1_General_CP1_CI_AS.

4

Installing AdminStudio 2015 Limited Editions

This chapter explains how to install the AdminStudio Limited Editions:

- [Installing AdminStudio 2015 ZENworks Edition](#)
- [Installing AdminStudio 2015 Limited Edition for LANDesk Management Suite](#)
- [Installing AdminStudio 2015 Symantec Limited Edition](#)

Installing AdminStudio 2015 ZENworks Edition

To install AdminStudio 2015 ZENworks Edition, perform the following steps.



Task:

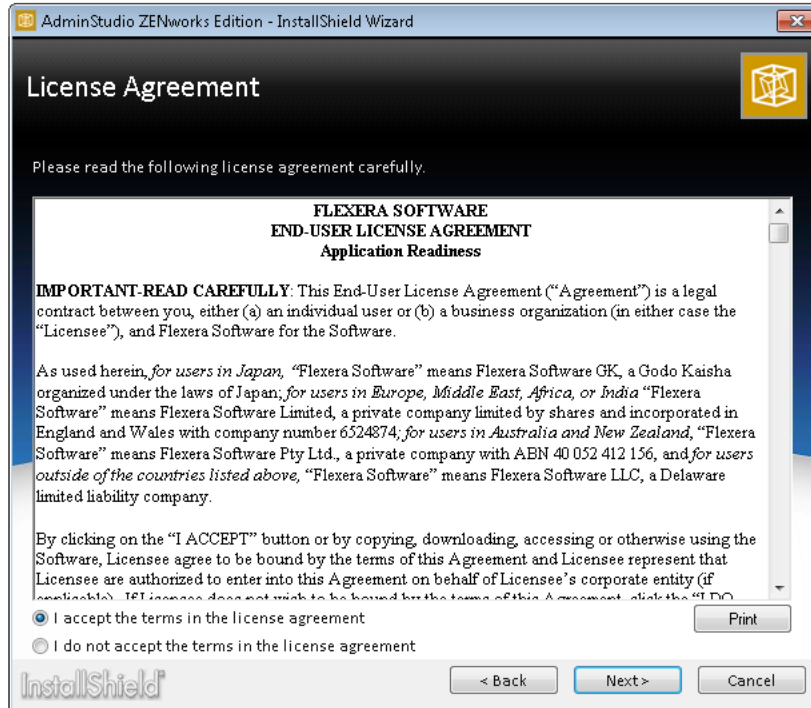
To install AdminStudio ZENworks Edition:

1. Launch the AdminStudio ZENworks Edition installation program. After the installation files are extracted, the **Welcome** panel for the **InstallShield Wizard for AdminStudio ZENworks Edition** opens.

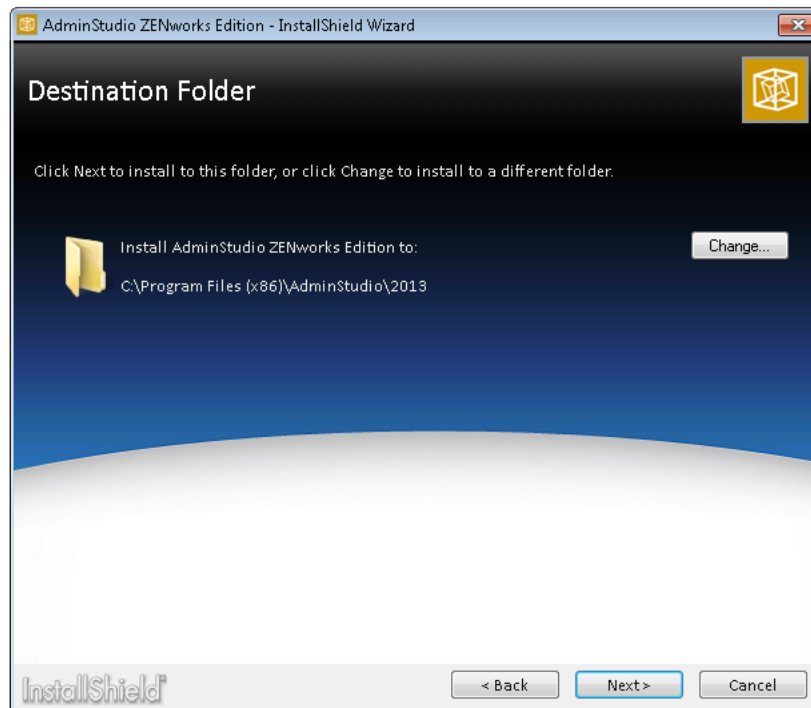


Note • Before the installer opens, you may be prompted to install Microsoft ReportViewer 2010.

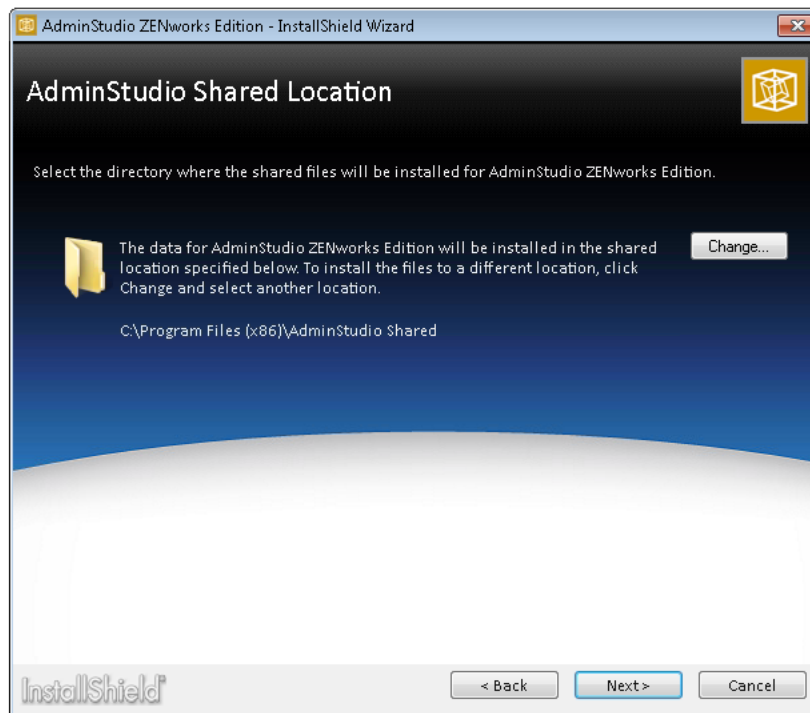
2. Click **Next**. The **License Agreement** panel opens.



3. Select the **I accept the terms in the license agreement** option and click **Next**. The **Destination Folder** panel opens.

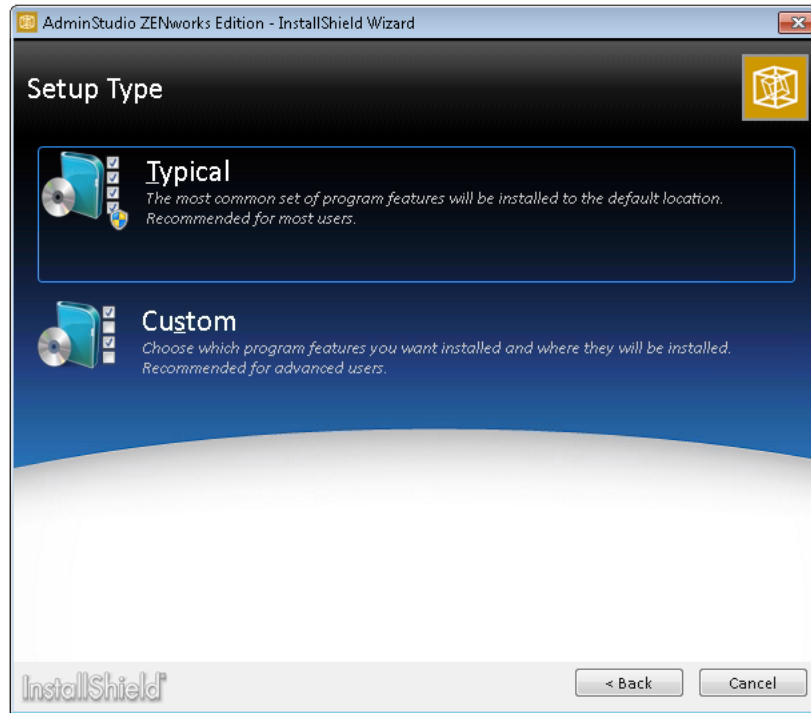


4. If you want to install AdminStudio in the specified directory, click **Next**. If you want to select a different directory, click **Change**, select a new directory, and then click **Next**. The **AdminStudio Shared Location** panel opens.



The AdminStudio shared directory contains shared information for repackaging and conflict identification, and other AdminStudio functions. If you are working in a team environment, the AdminStudio shared directory should be set to a centralized network location, accessible by all AdminStudio users at your organization, rather than on your local machine.

5. Specify the location of your organization's AdminStudio shared directory, and click **Next**. The **Setup Type** panel opens.



6. Select one of the following options to specify which components you want to install on this machine:
 - **Typical**—Select this option to install all client tool program features of AdminStudio including InstallShield Editor.
 - **Custom**—Select this option if you want to open an additional panel where you can select whether you want to install just the AdminStudio client tools or just InstallShield Editor.
7. Do one of the following:
 - **If you clicked Typical in the previous step**, the **Installing AdminStudio ZENworks Edition** panel opens and installation begins. Skip to [Step 9](#).
 - **If you selected Custom**, click **Next** and continue with [Step 8](#). The **Custom Setup** panel opens, listing two options:
 - **AdminStudio Client and Tools**—Installs the AdminStudio user interface and client tools, such as Repackager, Application Manager, and Distribution Wizard.
 - **InstallShield Editor**—Installs InstallShield Editor.
8. Click one of the two options. The **Installing AdminStudio ZENworks Edition** panel opens and the installation process begins.
9. When installation is complete, the **Completed** panel opens. Click **Finish** to exit the wizard.

10. Proceed with one of the following:

- [Activating AdminStudio ZENworks Edition](#)
- [Evaluating AdminStudio Enterprise Edition Client Tools](#)



Note • When you launch AdminStudio for the first time, you may be prompted to install the AdminStudio Service Packs. Follow the prompts to install all recommended Service Packs.

Installing AdminStudio 2015 Limited Edition for LANDesk Management Suite

To install AdminStudio 2015 Limited Edition for LANDesk Management Suite, perform the following steps.



Task:

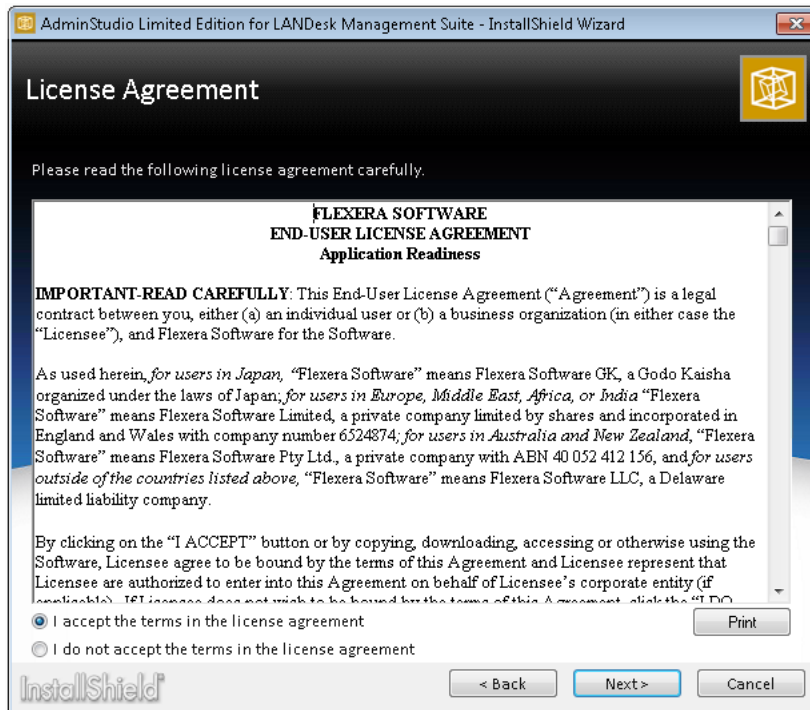
To install AdminStudio 2015 Limited Edition for LANDesk Management Suite:

1. Launch the AdminStudio 2015 Limited Edition for LANDesk Management Suite installation program. After the installation files are extracted, the **Welcome** panel of the InstallShield Wizard opens.

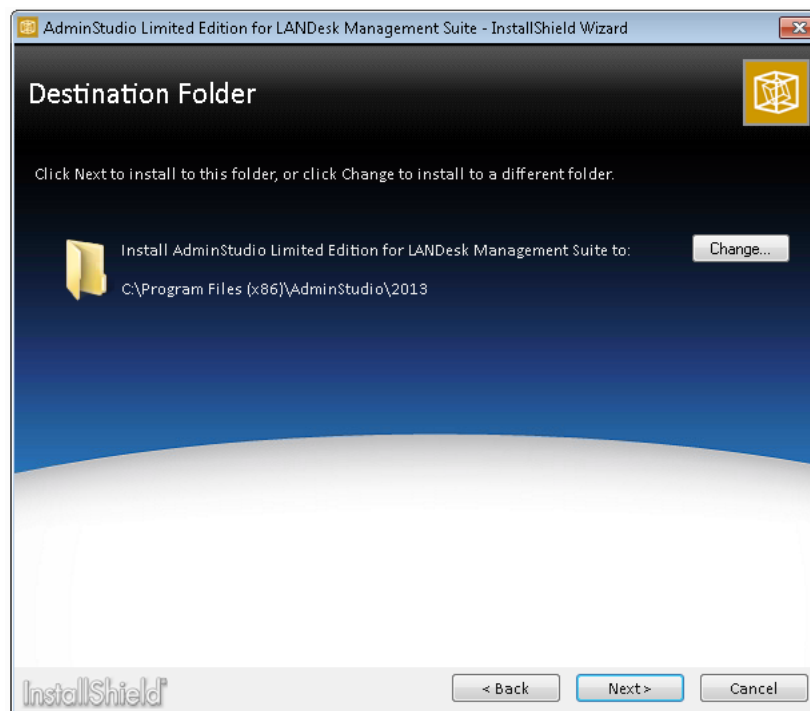


Note • Before the installer opens, you may be prompted to install Microsoft ReportViewer 2010.

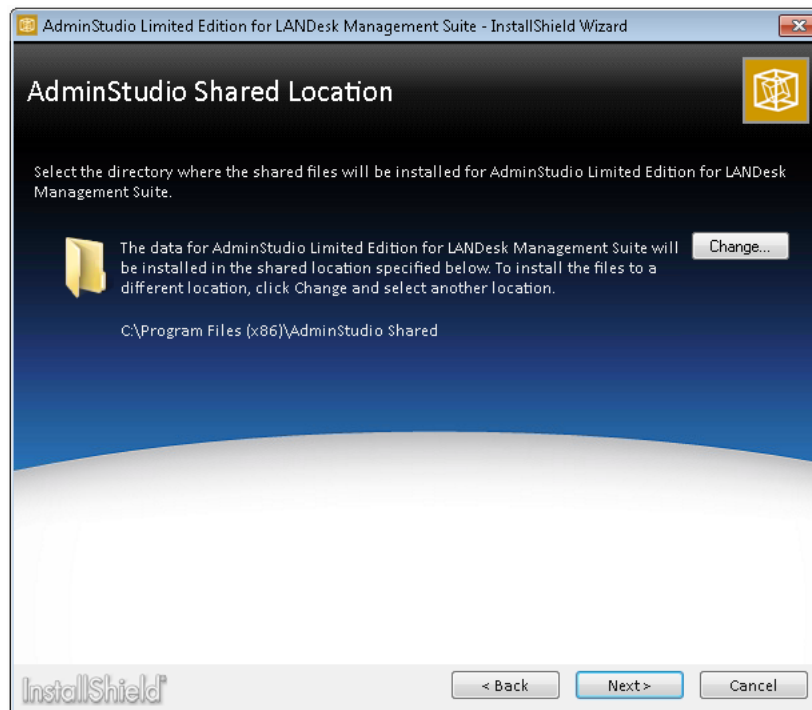
2. Click **Next**. The **License Agreement** panel opens.



3. Select the **I accept the terms in the license agreement** option and click **Next**. The **Destination Folder** panel opens.

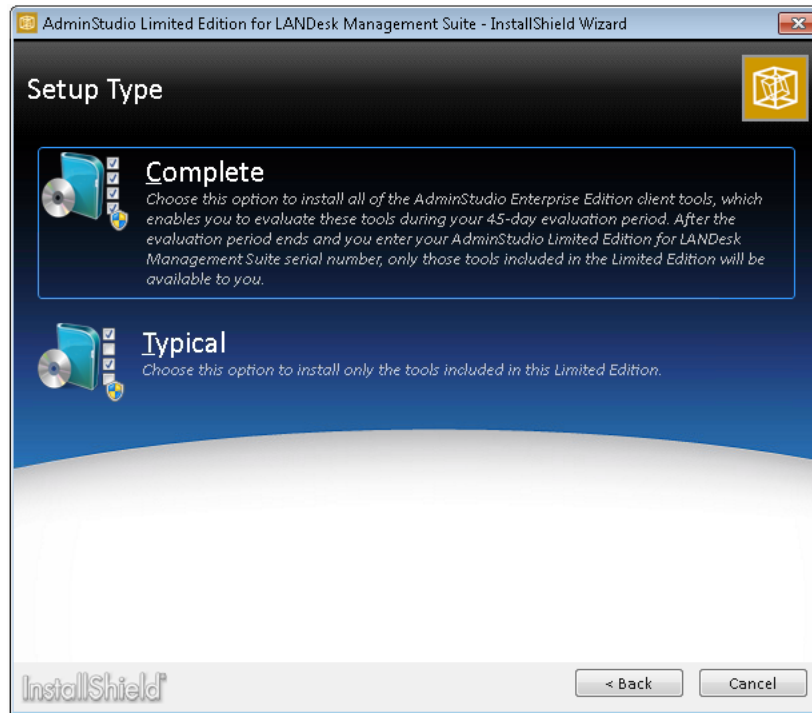


4. If you want to install AdminStudio in the specified directory, click **Next**. If you want to select a different directory, click **Change**, select a new directory, and then click **Next**. The **AdminStudio Shared Location** panel opens.



The AdminStudio Shared directory contains shared information for repackaging and conflict identification, and other AdminStudio functions. If you are working in a team environment, the AdminStudio Shared directory should be set to a centralized network location, accessible by all AdminStudio users at your organization, rather than on your local machine.

5. Specify the location of your organization's AdminStudio shared directory, and click **Next**. The **Setup Type** panel opens.



6. You can choose to evaluate the AdminStudio Limited Edition for LANDesk Management Suite for 45 days. The choice that you make on the **Setup Type** panel affects the tools that are available to you if you choose to evaluate the product. Select one of the following options:
 - **Complete**—Choose this option to install all of the AdminStudio Enterprise Edition client tools, which enables you to evaluate these tools during your 45-day evaluation period. After the evaluation period ends and you enter your AdminStudio Limited Edition for LANDesk Management Suite serial number, only those tools included in the Limited Edition will be available to you.
 - **Typical**—Choose this option to install only the tools included in this Limited Edition.

After you click **Complete** or **Typical**, the **Installing** panel opens and installation begins.

When installation is complete, the **Completed** panel opens.



7. Click **Finish** to close the wizard.
8. Proceed with one of the following:
 - [Registering and Activating AdminStudio Limited Edition for LANDesk Management Suite](#)
 - [Evaluating AdminStudio](#)

Installing AdminStudio 2015 Symantec Limited Edition

To install AdminStudio 2015 Symantec Limited Edition, perform the following steps.



Task:

To install AdminStudio 2015 Symantec Limited Edition:

1. Launch the AdminStudio 2015 Symantec Limited Edition installation program. After the installation files are extracted, the **Welcome** panel of the InstallShield Wizard opens.



Note • Before the installer opens, you may be prompted to install Microsoft ReportViewer 2010.

2. Click **Next**. The **License Agreement** panel opens.
3. Select the **I accept the terms in the license agreement** option and click **Next**. The **Destination Folder** panel opens.
4. If you want to install AdminStudio in the specified directory, click **Next**. If you want to select a different directory, click **Change**, select a new directory, and then click **Next**. The **AdminStudio Shared Location** panel opens.

The AdminStudio shared directory contains shared information for repackaging and conflict identification, and other AdminStudio functions. If you are working in a team environment, the AdminStudio shared directory should be set to a centralized network location, accessible by all AdminStudio users at your organization, rather than on your local machine.

5. Specify the location of your organization's AdminStudio shared directory, and click **Next**. The **Setup Type** panel opens.
6. Select one of the following options to specify which components you want to install on this machine:
 - **Typical**—Select this option to install all client tool program features of AdminStudio.
 - **Custom**—Select this option if you want to open an additional panel where you can select the tools you want to install.

After you specify the components you want to install, the **Installing** panel opens and installation begins.

When installation is complete, the **Completed** panel opens.

7. Click **Finish** to close the wizard.
8. To install WiseScript Editor, run the `wisScriptPackageEditor.exe` installer and follow the provided instructions.
9. Proceed with one of the following:
 - [Registering and Activating AdminStudio Symantec Limited Edition](#)
 - [Evaluating AdminStudio](#)

Activating AdminStudio

AdminStudio product activation requires you to obtain a valid serial number for one of the Full Editions (Standard, Professional, or Enterprise) or Limited Editions (ZENworks Limited Edition, Symantec Limited Edition, or Limited Edition for LANDesk Management Suite) of AdminStudio, and, in some cases, to register that serial number on the AdminStudio Web site. This chapter includes the following topics to assist you with activating your product:

- [About Activation](#)
- [Activating AdminStudio \(Full Edition\) Upon Initial Startup](#)
- [Activating AdminStudio ZENworks Edition](#)
- [Registering and Activating AdminStudio Limited Edition for LANDesk Management Suite](#)
- [Registering and Activating AdminStudio Symantec Limited Edition](#)
- [Activation Troubleshooting](#)



Note • The length of the evaluation period of AdminStudio varies by Edition, as described below. See [Evaluating AdminStudio](#) for more information.

- **Limited Edition for ZENworks Management Suite**—You can choose to evaluate the AdminStudio Enterprise Edition client tools for 60 days without entering a serial number and activating the product.
- **Limited Edition for LANDesk Management Suite**—You can choose to evaluate the AdminStudio client tools for 45 days prior to activating it. The tools available to you during the evaluation mode depends upon the selection you made on the **Setup Type** panel of the AdminStudio Limited Edition for LANDesk Management Suite installation: **Typical** or **Complete**.

About Activation

AdminStudio product activation requires you to obtain a valid serial number for one of the Editions of AdminStudio, and, in some cases, to register that serial number on the AdminStudio Web site.

- [About Serial Numbers](#)
- [About Registration](#)

When you launch AdminStudio or one of its tools for the first time, you are notified that you are using a time-limited trial version, and you are given the opportunity to evaluate the product or to activate it by entering a valid Serial Number for an AdminStudio Edition.

- **You have purchased AdminStudio**—If you have purchased AdminStudio and have received a serial number (for the Standard, Professional, or Enterprise Edition), select **Activate or Purchase AdminStudio** and click **Next**. See [Activating AdminStudio \(Full Edition\) Upon Initial Startup](#).
- **You want to evaluate AdminStudio**—If you have not yet purchased AdminStudio, but want to evaluate it for 21 days, select **Continue to Evaluate AdminStudio** and click **Next** (or just wait ten seconds). The product will launch. See [Evaluating AdminStudio](#) for more information.

About Serial Numbers

Your serial number is a 16-digit number which follows a 4-sets-of-4-characters format, including dashes:

XXXX-XXXX-XXXX-XXXX

After you purchase AdminStudio, the way you obtain a serial number depends upon whether you downloaded the application software or whether you obtained a physical copy of the application software on a DVD:

- **Downloaded**—If you purchased and downloaded your software from the Flexera Software Product and License Center site, you should have received your serial number via email.
- **Physical Media**—If you purchased a physical copy of the software from Flexera Software or a reseller, your serial number is located on the adhesive label on the back of your product CD case.

If you cannot find your serial number, call your AdminStudio customer service representative.

About Registration

Whether or not you need to register your serial number to activate your product depends upon whether you purchased the software directly from Flexera Software, or have purchased it from a reseller:

- **If you have purchased your software directly from Flexera Software**, you do not need to register your serial number to activate your product. When you launch AdminStudio for the first time and enter your serial number, your product is activated via the Internet (online activation).
- **If you purchased your software from a reseller** (not directly from Flexera Software), you must register your serial number before you can activate your product.

Activating AdminStudio (Full Edition) Upon Initial Startup

The steps you take to activate AdminStudio the first time you open it depend upon whether you purchased AdminStudio directly from Flexera Software or from a Reseller.

- [Activating AdminStudio Purchased from Flexera Software](#)
- [Activating AdminStudio Purchased from a Reseller](#)

Activating AdminStudio Purchased from Flexera Software

If you purchased AdminStudio directly from Flexera Software and want to activate it upon initial start up, perform the following steps.



Task: *To register and activate AdminStudio:*

1. Locate your serial number:
 - **Downloaded**—If you purchased and downloaded your software from the Flexera Software Web site, you should have received your serial number via email.
 - **Physical Media**—If you purchased a physical copy, your serial number is located on the adhesive label on the back of your product CD case.
2. Launch AdminStudio. A dialog box opens, stating that you are using a time-limited trial version.
3. Select **Activate or Purchase AdminStudio** and click **Next**. You are prompted to **Enter Your Serial Number**.
4. Enter the serial number of the edition you purchased and click the **Activate** button. After a few seconds, you will receive a message that activation was successful.

5. Click **Finish**. AdminStudio will launch.

Your product would then be fully activated and you would be able to use all of the tools that are included in the Edition of AdminStudio that you purchased.



Note • If you do not have a online connection, you can activate your product via a web page. See [Activating Through a Web Page](#).



Note • For information on how to configure AdminStudio to get license information from a FLEXnet license server, see the FLEXnet License Server for AdminStudio Installation Guide.



Note • When you launch AdminStudio for the first time, you may be prompted to install the AdminStudio Service Packs. Follow the prompts to install all recommended Service Packs.

Activating AdminStudio Purchased from a Reseller

If you purchased AdminStudio from a reseller and want to activate it upon initial start up, perform the following steps.



Task: *To register and activate AdminStudio:*

1. Locate the serial number that came with your software, which is located on the adhesive label on the back of your product CD case.

2. Open the Flexera Software [Registration Page](#) at the following address:

<http://shop.flexerasoftware.com/registration/serials.aspx>

The Flexera Software Registration/Activation Page opens.

3. Enter your Product serial number in the **Serial Number** field and click **Continue to Next Step**.



Note • Serial numbers are CASE sensitive and do not require dashes.

4. Enter the requested information until the Registration process is complete.
5. Launch AdminStudio. A dialog box opens, stating that you are using a time-limited trial version
6. Select **Activate or Purchase AdminStudio** and click **Next**. You are prompted to **Enter Your Serial Number**.
7. Enter the same serial number that you entered on the AdminStudio Registration page and click **Verify**. First, a message appears stating that the serial number is being verified, and then the message [Verification Complete](#) appears.
8. Click **Finish**. AdminStudio will launch.

Your product would then be fully activated and you would be able to use all of the tools that are included in the Edition of AdminStudio that you purchased.



Note • When you launch AdminStudio for the first time, you may be prompted to install the AdminStudio Service Packs. Follow the prompts to install all recommended Service Packs.



Note • If you do not have an online connection, you can activate your product via a web page. See [Activating Through a Web Page](#).

Activating AdminStudio ZENworks Edition

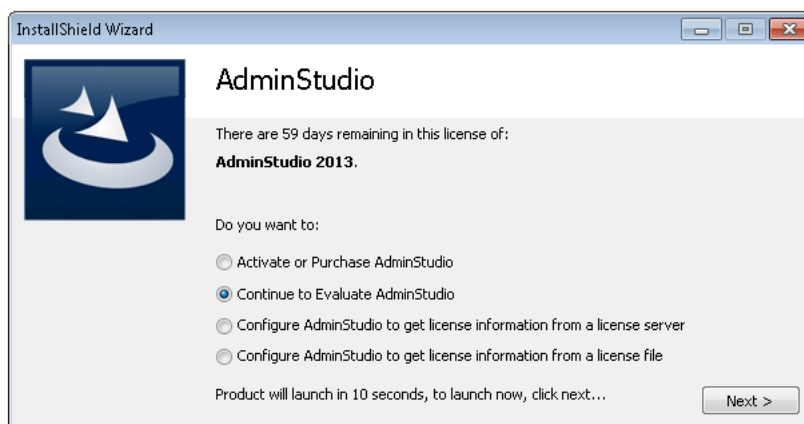
If you want to activate AdminStudio ZENworks Edition, perform the following steps.



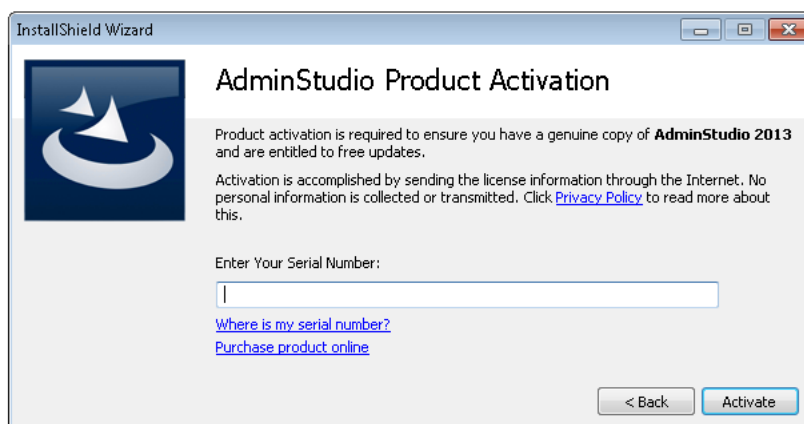
Task:

To activate your installation of AdminStudio ZENworks Edition:

1. Launch AdminStudio ZENworks Edition. The following dialog box opens, prompting you to either activate or evaluate AdminStudio.



2. Select **Activate or Purchase AdminStudio** and click **Next**. The AdminStudio Product Activation dialog box opens, and you are prompted to **Enter Your Serial Number**.

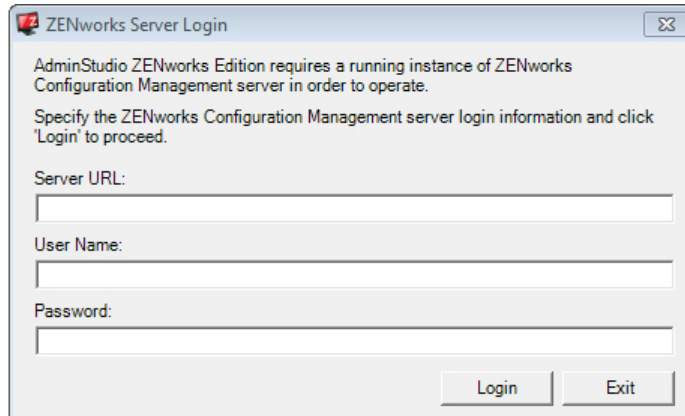


3. Enter the serial number that you received from Novell and click **Activate**. First, a message appears stating that the serial number is being validated, and then the message **Activation Complete** appears. Your product would then be fully activated and you would be able to use all of the tools that are included in the AdminStudio ZENworks Edition that you have downloaded.



Note • If you do not have an online connection, you can activate your product via a web page. See [Activating Through a Web Page](#).

4. Click **Finish**. AdminStudio launches. You will then be prompted to log in to a ZENworks Configuration Management server on the **ZENworks Server Login** dialog box.



The dialog box is titled "ZENworks Server Login". It contains the following text: "AdminStudio ZENworks Edition requires a running instance of ZENworks Configuration Management server in order to operate. Specify the ZENworks Configuration Management server login information and click 'Login' to proceed." Below this text are three input fields: "Server URL:", "User Name:", and "Password:". At the bottom right are two buttons: "Login" and "Exit".



Note • Your organization should have previously installed the ZENworks server and provided you with the appropriate login credentials for that server.

5. Enter the following information:

Field	Description
Server URL	<p>Enter the URL of your organization's ZENworks Configuration Management server, preceded by <code>http://</code>, such as:</p> <p><code>http://111.22.33.444</code></p> <p>You can enter either the server name or the IP address.</p> <div data-bbox="578 1373 621 1419" data-label="Image"></div> <p>Note • Do not use the <code>https://</code> prefix.</p>
User Name Password	<p>Enter the login credentials to login to your ZENworks Configuration Management server.</p>



Tip • After a successful login, you will not be prompted to login again.

6. Click **Login**. AdminStudio ZENworks Edition opens.

Registering and Activating AdminStudio Limited Edition for LANDesk Management Suite

To register and activate AdminStudio Limited Edition for LANDesk Management Suite, perform the following steps.



Important • After you activate AdminStudio Limited Edition for LANDesk Management Suite, it can only be used when the LANDesk Management Suite is already installed. The first time you launch an AdminStudio LANDesk Edition tool, you will be prompted to log in to a LANDesk Management Suite Server. After a successful login, you will not be prompted to login again.



Task: *To register and activate your installation of AdminStudio Limited Edition for LANDesk Management Suite:*

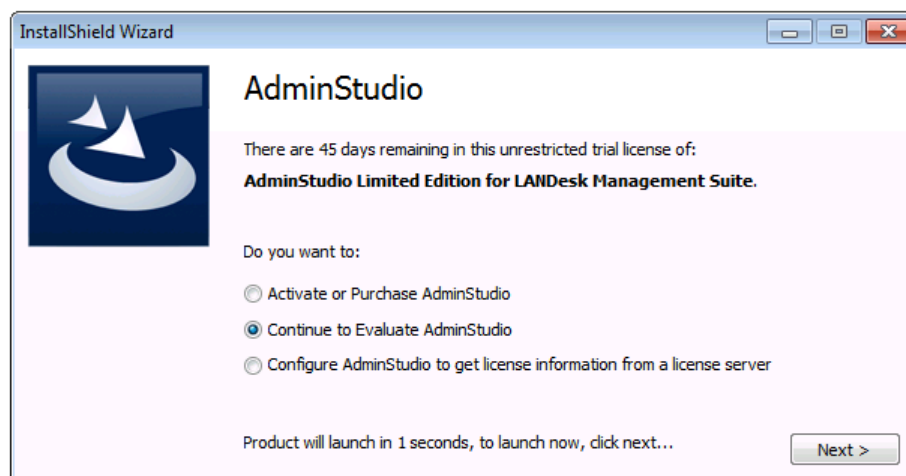
1. When you complete the Limited Edition for LANDesk Management Suite installation, the **AdminStudio Limited Edition for LANDesk Management Suite Serial Number Registration** page opens in a Web browser.



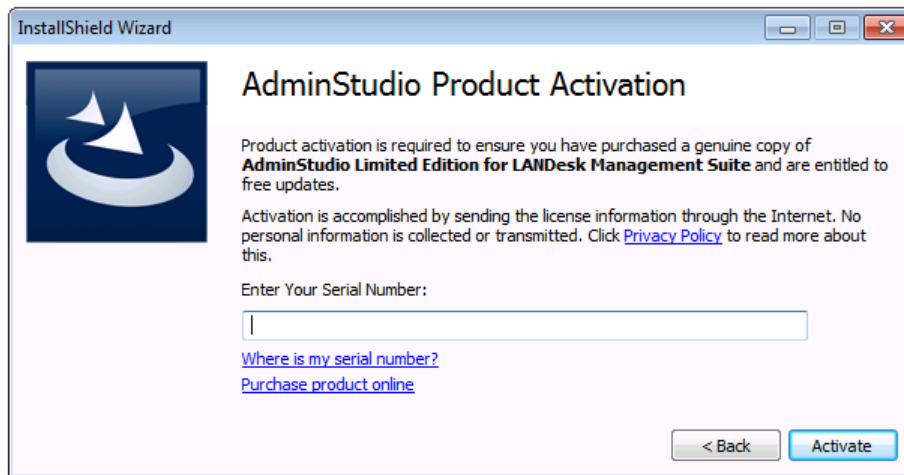
Note • To access this page, you can also go to the following location on the Flexera Software Web site:

http://www.flexerasoftware.com/browser/as_landesk/serial_registration.htm

2. Follow the prompts to complete the registration. When you have completed the registration, your AdminStudio Limited Edition for LANDesk Management Suite Serial Number will be displayed. You will use this serial number to activate AdminStudio.
3. Copy this serial number into the clipboard. You may also want to save a copy of it in a text file.
4. Launch AdminStudio Limited Edition for LANDesk Management Suite. The following dialog box opens, prompting you to either activate or evaluate AdminStudio.



5. Select **Activate or Purchase AdminStudio** and click **Next**. The AdminStudio Product Activation dialog box opens, and you are prompted to **Enter Your Serial Number**.

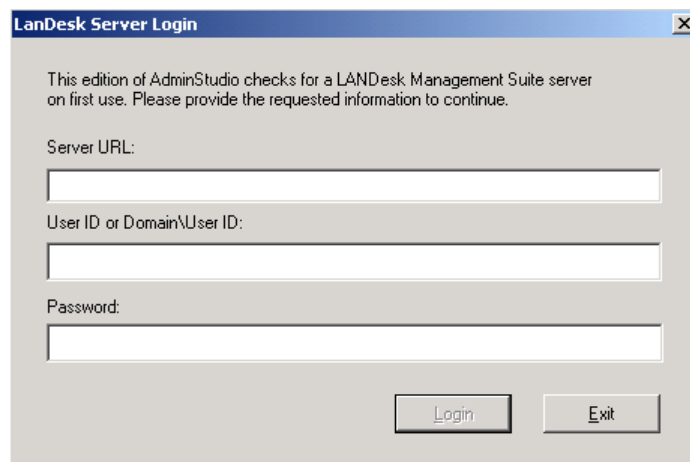


6. Enter your serial number and click **Activate**. First, a message appears stating that the serial number is being validated, and then the message **Activation Complete** appears. Your product would then be fully activated and you would be able to use all of the tools that are included in the AdminStudio Limited Edition for LANDesk Management Suite.



Note • If you do not have an online connection, you can activate your product via a web page. See [Activating Through a Web Page](#).

7. Click **Finish** to open the tool and begin using it. You will then be prompted to log in to a LANDesk Management Suite server.



Note • Your organization should have previously installed the LANDesk Management Suite server and provided you with the appropriate login credentials for that server. After a successful login, you will not be prompted to login again.

8. Enter the appropriate login credentials for your organization and click **Login**. AdminStudio Limited Edition for LANDesk Management Suite opens.

Registering and Activating AdminStudio Symantec Limited Edition

To register and activate AdminStudio Symantec Limited Edition, perform the following steps.



Important • After you activate AdminStudio Symantec Limited Edition, it can only be used when the Symantec Altiris Management Server is already installed. The first time you launch an AdminStudio Symantec Edition tool, you will be prompted to log in to a Symantec Altiris Management Server. After a successful login, you will not be prompted to login again.



Task:

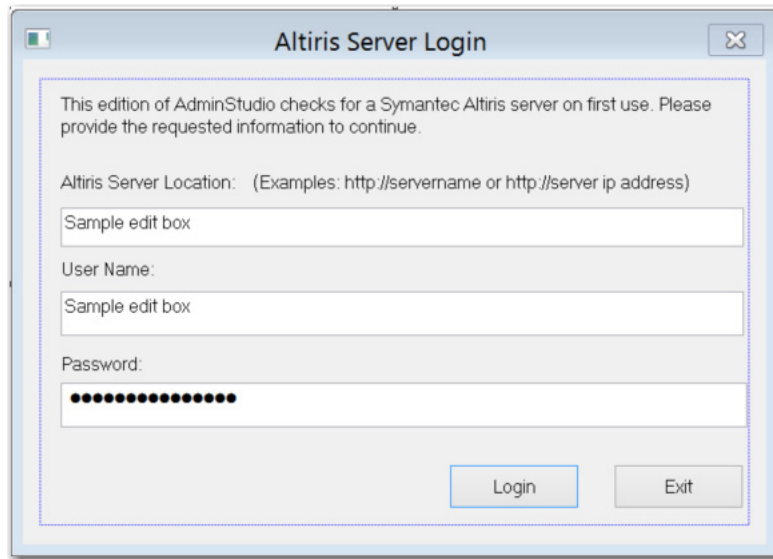
To register and activate your installation of AdminStudio Symantec Limited Edition:

1. When you complete the AdminStudio Symantec Limited Edition installation, the **AdminStudio Symantec Limited Edition Serial Number Registration** page opens in a Web browser.
2. Follow the prompts to complete the registration. When you have completed the registration, your AdminStudio Symantec Limited Edition Serial Number will be displayed. You will use this serial number to activate AdminStudio.
3. Copy this serial number into the clipboard. You may also want to save a copy of it in a text file.
4. Launch AdminStudio Symantec Limited Edition. A dialog box opens, prompting you to either activate or evaluate AdminStudio.
5. Select **Activate or Purchase AdminStudio** and click **Next**. The AdminStudio Product Activation dialog box opens, and you are prompted to **Enter Your Serial Number**.
6. Enter your serial number and click **Activate**. First, a message appears stating that the serial number is being validated, and then the message **Activation Complete** appears. Your product would then be fully activated and you would be able to use all of the tools that are included in the AdminStudio Symantec Limited Edition.



Note • If you do not have an online connection, you can activate your product via a web page. See [Activating Through a Web Page](#).

7. Click **Finish** to open the tool and begin using it. You will then be prompted to log in to a Symantec Altiris Management Server.



The image shows a Windows-style dialog box titled "Altiris Server Login". Inside the dialog, there is a message: "This edition of AdminStudio checks for a Symantec Altiris server on first use. Please provide the requested information to continue." Below this message are three input fields: "Altiris Server Location: (Examples: http://servername or http://server ip address)" with a "Sample edit box" placeholder, "User Name:" with a "Sample edit box" placeholder, and "Password:" with a masked input field showing 12 dots. At the bottom right of the dialog are two buttons: "Login" and "Exit".



Note • Your organization should have previously installed the Symantec Altiris Management server and provided you with the appropriate login credentials for that server. After a successful login, you will not be prompted to login again.

8. Enter the appropriate login credentials for your organization and click **Login**. AdminStudio Symantec Limited Edition opens.

Activation Troubleshooting

AdminStudio is protected by our own licensing technology in order to ensure the acceptable use of our products on a single and unique machine.

In order to install the full version of AdminStudio, it must first be activated through communication with an activation server. While we have thoroughly tested our license protection, there are some circumstances that could prevent this activation from occurring. The troubleshooting steps in this section should resolve these circumstances.

- [General Troubleshooting](#)
- [Activating Through a Web Page](#)
- [Activating Products Silently](#)
- [Reactivating AdminStudio on a Different Computer](#)

General Troubleshooting

The following troubleshooting steps should resolve most activation issues:

- [General Troubleshooting Steps](#)
- [Virtual Environments](#)
- [Authenticated Proxy Support for Activation](#)

General Troubleshooting Steps

If you are having trouble activating your product, review the following troubleshooting steps:

- **Are you registered?** If you have purchased your software through a reseller, registration of your serial number is required before activation can take place. See [About Registration](#)
- **Disable any firewalls or proxy settings.** Certain firewall and proxy configurations can prevent the Activation Service from communicating with the Flexera Software-hosted activation servers. We recommend temporarily disabling firewalls and proxies while installing and uninstalling in order to allow full communication with our servers. If you are unable to modify these services, then web page activation may be required. See [Activating Through a Web Page](#)
- **Check the serial number.** Confirm that the serial number you are entering is correct, and that it has been entered in the format xxxxxxx-xxx-xxxxxxxxxx (7-3-10).
- **Was your product previously activated on another machine?** If your product has been previously activated on another machine, you must first deactivate the license on that machine through a full uninstall before it can be activated on the new machine. Deactivation requires an internet connection to communicate with the server to properly free up a different machine for activation.



Note • For more detailed information about deactivation, please see the following knowledge base article:

[Activation and Deactivation Information for InstallShield and AdminStudio](#)

Virtual Environments

Some known issues with activation relate to virtual environments (VMware, VirtualPC, etc.) and running system restore utilities. It is recommend that AdminStudio be installed on stable systems that are not run in virtual environments and that are not re-imaged frequently.

Authenticated Proxy Support for Activation

AdminStudio 7.5 or later supports authenticated proxies for activation.

Activating Through a Web Page

If you do not have an Internet connection or if you are having problems completing the online activation process, the activation wizard gives you the option of performing offline activation through a self-service Web page (<http://www.installshield.com/offlineactivation>) on a different machine.



Task: *To activate AdminStudio through a web page:*

1. Attempt to activate AdminStudio through the Internet. If it cannot be completed, the activation wizard displays a message explaining why it could not occur.
2. Click the **Proceed with offline activation** button. The **Offline Activation** dialog opens. The **Request text** box contains your request text. The request text starts with `<?xml version`, and it ends with `</Request>`.
3. To save the request text to a text file that you can upload from a machine with an Internet connection, click the **Save** button. The wizard lets you save the text as a `.request` file.
4. Visit the Offline Activation Web page (<http://www.installshield.com/offlineactivation>)—a part of the Flexera Software Product and License Center—and follow the instructions to browse to the `.request` file that you saved.

When you click the button on the Offline Activation Web page to submit the activation request and obtain the activation response file (`.xml`), the Web page prompts you for a place to save the `.xml` file. Save it and make it available on the machine on which you initiated the activation process.

5. When you have the activation response file (`.xml`) and you are ready to complete the activation process, launch AdminStudio to open the activation wizard.
6. Proceed to the **Offline Activation** dialog, which has a **Response** text box.
7. Click the **Load** button. The **Open** dialog opens.
8. Browse to the activation response file (`.xml`), and then click the **Open** button. The **Open** dialog closes, and the wizard writes the response text in the **Response text** box. The response text starts with `<?xml version`, and it ends with `</Response>`.



Note • As an alternative for step 8, you can copy the response text to your Clipboard and then use the Paste button to paste the Clipboard contents into the **Response text** box.

9. Click the **Activate** button. The activation wizard activates AdminStudio.



Tip • The aforementioned procedure is also used to perform an offline return of a license.

Activating Products Silently

AdminStudio supports silent activation, enabling you to use public Windows Installer properties to enter the serial number automatically during installation.

To enable silent activation, you need to set the following public Windows Installer properties.

- **PRODUCTID property**—Set the PRODUCTID property to a valid AdminStudio serial number. Enter this number in the following 4-4-4-4 (4 sets of 4 characters) format, including dashes: XXXX-XXXX-XXXX-XXXX.
- **ASACTSTATUS property**—Set the ASACTSTATUS property to 0 to allow the installer to show the status of the activation process as the product is activated, or set it to 1 to perform the activation without showing any status of the activation process.

Activating Silently in a Self-Hosted Environment with a License Server

To activate AdminStudio silently when configuring AdminStudio to use a license server, you need to use a transform file that includes a custom action that runs a command line that specifies the license server name.



Task:

To activate AdminStudio silently in a self-hosted environment with a license server:

1. Create a transform file that includes a custom action that runs the following command line:

```
AdminStudioInstallDir\Common\tpsconfig.exe /silent /set_license_server@LICENSE_SERVER
```

For example:

```
tpsconfig.exe /silent /set_license_server@XYZSERVER
```



Note • If you have configured the license server to run on a custom port, put the custom port number before the @character, such as:

```
tpsconfig.exe /silent /set_license_serverLS_PORT@LICENSE_SERVER  
tpsconfig.exe /silent /set_license_server8300@XYZSERVER
```

2. Use the following command line to install the transform with the AdminStudio installation:

```
AdminStudio2015.exe /silent ASCommandLine="TRANSFORMS=MyTransform.mst"
```

Reactivating AdminStudio on a Different Computer

AdminStudio uses a security technology known as the Activation Service. With this licensing software, the user of the installed product is required to “activate” via communication with a Flexera Software-hosted server. This process enables the product to work on a single, unique computer at a time, while disallowing simultaneous installation on other unauthorized systems.

If, after installing AdminStudio on a computer, you get a new computer or reformat the hard drive on your existing computer and then reinstall AdminStudio on that new computer or reformatted hard drive, the serial number you initially entered will no longer activate AdminStudio. Because you have already used that serial number to activate an installation of AdminStudio, it is now deactivated.

To reactivate your serial number, you need to first deactivate the license on that machine through a full uninstall before it can be activated on the new machine. Deactivation requires an Internet connection to communicate with the server to properly free up a different machine for activation.



Note • If you are unable to perform a full uninstall of AdminStudio (because, for example, you no longer have the computer you originally installed AdminStudio on), you need to contact AdminStudio Sales to have them authorize a new activation.

Upgrading Your Product Edition

If you originally purchased AdminStudio Standard or Professional Edition, or if you are using a Limited Edition, and want to upgrade to a higher Edition, an upgrade feature has been built-in to AdminStudio that allows you to activate features in a higher Edition without re-installing the application.

To upgrade your product edition, perform the following steps:

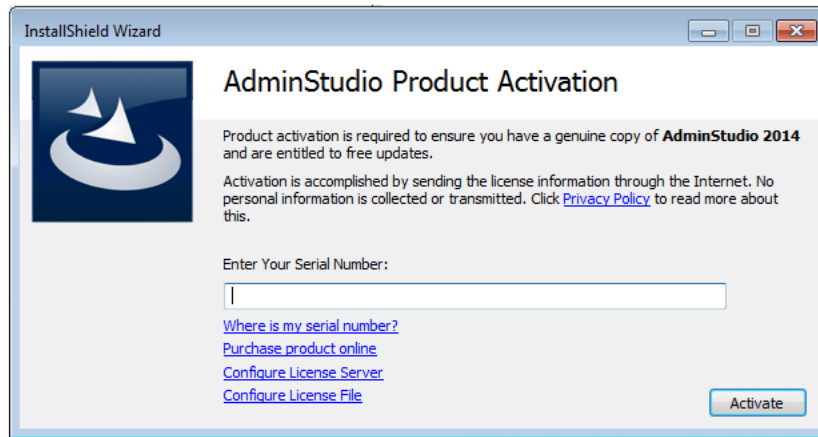


Task:***To upgrade your AdminStudio Edition:***

1. Contact an AdminStudio Sales Representative and purchase a serial number for the Edition that you want to upgrade to.
2. Launch AdminStudio or Application Manager.
3. Do one of the following:
 - On the AdminStudio **Help** menu, click **About AdminStudio**.
 - On the Application Manager **Support** tab, click **About Application Manager**.

The AdminStudio or Application Manager About dialog box opens.

4. Click the **Upgrade** button. The **AdminStudio Product Activation** dialog box opens, prompting you to enter the serial number of the edition that you want to upgrade to.



5. Enter the serial number of the edition you purchased and click the **Activate** button. After a few seconds, you will receive a message that activation was successful. The functionality of the upgraded edition is immediately available to you.

Evaluating AdminStudio

If you want to try out AdminStudio prior to making your purchasing decision, you can evaluate it prior to activation: The trial period available to you varies by Edition:

Table 7-1 • Evaluation Periods Per Edition

Edition	Evaluation Period
AdminStudio Standard, Professional, Enterprise Editions	21 days
AdminStudio ZENworks Limited Edition	60 days
AdminStudio Limited Edition for LANDesk Management Suite	45 days
AdminStudio Symantec Edition	21 days

In evaluation mode, you have the functionality of the AdminStudio Enterprise Edition client tools available to you.

This chapter includes the following topics:

- [Evaluating AdminStudio Enterprise Edition Client Tools](#)
 - [AdminStudio 2015 Evaluation Restrictions](#)
 - [Evaluating AdminStudio's Microsoft App-V Support](#)
 - [Evaluating the Automated Application Converter "Multiple Application" Option](#)
- [Activating AdminStudio After Evaluation Period](#)

Evaluating AdminStudio Enterprise Edition Client Tools

In evaluation mode, you have the functionality of the AdminStudio Enterprise Edition client tools available to you.

If you have not purchased a license for AdminStudio, you can still install AdminStudio and use it for a limited number of days without performing serial number verification. When you run AdminStudio in this trial mode, all of its features are fully available. The dialog box that AdminStudio displays whenever you launch AdminStudio in trial mode shows you how many days are left in your trial period.

If you do not verify AdminStudio within the trial period, AdminStudio will stop working when the trial period has ended. You can perform serial number verification at any time before or after the trial period has ended.

To evaluate the Enterprise Edition client tools, perform the following steps.



Task: *To evaluate the AdminStudio Enterprise Edition client tools:*

1. Install AdminStudio.
2. Launch AdminStudio. A dialog box opens, stating that you are using a time-limited trial version.
3. If you want to evaluate AdminStudio, select **Continue to Evaluate AdminStudio** and click **Next** (or just wait ten seconds). The product will launch.
 - When you run AdminStudio in this trial mode, all of its features are fully available.
 - Each time you open AdminStudio while you are in evaluation mode, this dialog box shows you how many days are left in your trial period.
4. If you have five or fewer days left in your trial period, the dialog box remains open, requiring you to click before you can proceed. Do one of the following:
 - a. If your trial period is not over, you can continue to use AdminStudio by selecting the **Continue to Evaluate AdminStudio** option and clicking **Next**.
 - b. If you have already purchased a serial number or want to purchase one online, select **Activate or Purchase AdminStudio** and click **Next**.
5. When the evaluation period expires, you could then activate AdminStudio by following the steps in [Activating AdminStudio After Evaluation Period](#).



Note • For additional information on evaluating the AdminStudio Limited Edition for LANDesk Management Suite, see [Evaluating the Client Tools in the Limited Edition for LANDesk Management Suite](#).

AdminStudio 2015 Evaluation Restrictions

When you run AdminStudio in trial/evaluation mode, all of the features in the AdminStudio Enterprise Edition client tools are fully available, with the following restrictions:

- **Can create only one Application Catalog**—You are permitted to create only one Application Catalog, and it must be named `AdminStudio Evaluation Catalog`.
- **Ten package import limit**—Only 10 total packages (of one or more deployment types) can be imported into the Application Catalog.
- **Package deletion not permitted**—After you import a package into the Application Catalog, you are not permitted to delete it.
- **AdminStudio Platform API support is disabled**—All platform support is disabled.

Evaluating AdminStudio's Microsoft App-V Support

While evaluating the AdminStudio Enterprise Edition client tools, you will be able to convert a Windows Installer package to an App-V application using the Automated Application Converter, Repackager, and the InstallShield App-V Assistant. However, an App-V application built using an evaluation version of AdminStudio will display the following message every time it is launched:

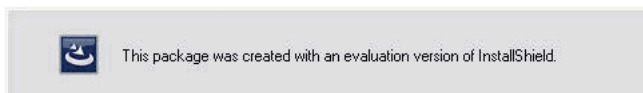


Figure 7-1: Evaluation Version Message

After purchasing the AdminStudio Virtualization Pack, you will be able to remove this message by rebuilding the App-V application.

Evaluating the Automated Application Converter “Multiple Application” Option

The “multiple application” option of Automated Application Converter and the Conversion Wizard is only available when you purchase the Virtualization Pack with AdminStudio Enterprise Edition.



Note • : If you purchase the Virtualization Pack with AdminStudio Standard or Professional Editions, you will only be able to convert one package at a time, using one virtual machine.

When using an evaluation version of AdminStudio, you will be able to use Automated Application Converter or Conversion Wizard to convert a directory full of Windows Installer packages into individual virtual packages, but the conversion will be limited to three packages per run, using only one virtual machine. Therefore, only the first three packages that Automated Application Converter encounters will be converted to virtual applications.

Evaluating the Client Tools in the Limited Edition for LANDesk Management Suite

There are several additional guidelines that are followed when evaluating the AdminStudio client tools in the Limited Edition for LANDesk Management Suite:

- AdminStudio Client Tools Available During Evaluation: Typical or Custom
- Server Connection Not Required During Evaluation Period

AdminStudio Client Tools Available During Evaluation: Typical or Custom

The tools available to you during the evaluation period depends upon the selection you made on the **Setup Type** panel of the AdminStudio Limited Edition for LANDesk Management Suite installation:

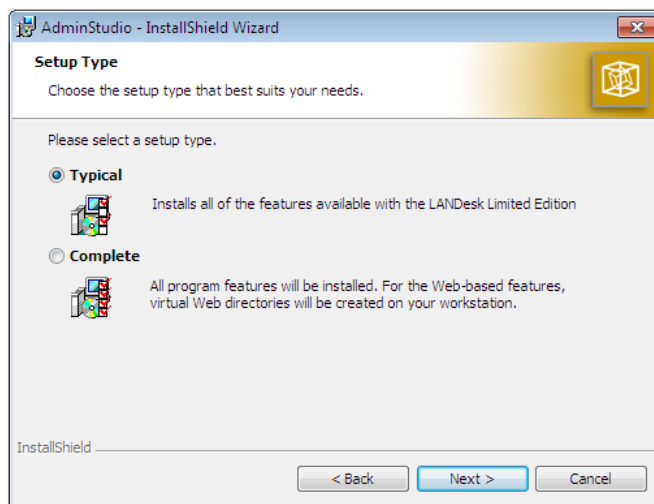


Figure 7-2: Setup Type Panel

The choice that you make on the **Setup Type** panel affects the tools that are available to you if you choose to evaluate the product:

- **Typical**—If you choose this option, only the tools included in this Limited Edition are installed. Therefore, during the evaluation period, only those tools are available.
- **Complete**—If you choose this option, all of the AdminStudio Enterprise Edition client tools are installed. This enables you to evaluate all of these tools during your 45-day evaluation period. After the evaluation period ends and you enter your AdminStudio Limited Edition for LANDesk Management Suite serial number, only those tools included in the Limited Edition will be available to you.

Server Connection Not Required During Evaluation Period

After you activate AdminStudio Limited Edition for LANDesk Management Suite, it can only be used when the LANDesk Management Suite is already installed. However, in evaluation mode, there is no LANDesk Management Suite Server connection requirement.

Activating AdminStudio After Evaluation Period

If you chose the evaluation option when you opened AdminStudio for the first time and now you want to purchase an AdminStudio Edition and activate it, perform the following steps.



Task: *Activating AdminStudio after using it in Evaluation mode:*

1. Contact AdminStudio Sales and purchase a Serial Number for an edition of AdminStudio.
2. Launch AdminStudio. A dialog box opens, stating that you are using a time-limited trial version and listing the number of days left in your trial period.
3. Select **Activate or Purchase AdminStudio** and click **Next**. You are prompted to **Enter Your Serial Number**.
4. Enter the serial number of the edition you purchased and click the **Activate** button. After a few seconds, you will receive a message that activation was successful.
5. Click **Finish**. AdminStudio will launch.

Your product would then be fully activated and you would be able to use all of the tools that are included in the Edition of AdminStudio that you purchased.



Note • If you do not have a online connection, you can activate your product via a Web page. See [Activating Through a Web Page](#).

Index

A

- activation 63
 - about 64
 - of AdminStudio purchased from Flexera Software 65
 - of AdminStudio purchased from reseller 65
 - offline 75
 - registering your product 65
 - silent 76
 - troubleshooting 73
 - upon initial startup 65
 - using Windows Installer properties 76
 - via a web page 75
- AdminStudio
 - about activation 64
 - activation 63, 65
 - AdminStudio Shared directory 40, 54, 58, 61
 - client tools installation 37, 51
 - client-only install 41
 - complete install 41
 - custom install 41
 - database server permissions 31
 - editions 6
 - Enterprise edition 6
 - evaluating Enterprise Edition client tools 82
 - how to evaluate 81
 - installing 37, 38, 51
 - installing IIS 33
 - minimum permissions 31
 - minimum privileges 31
 - Professional edition 6
 - reactivating on different computer 77
 - registering your product 65
 - running client tools installation 38
 - serial numbers 64
 - Standard edition 6
 - test drive 81
 - trial version 81
 - upgrading 79
 - upgrading to Professional or Enterprise Edition 79
 - upgrading your product Edition 79
- AdminStudio 5.x
 - upgrading Application Catalog from 43
- AdminStudio 6.x
 - upgrading Application Catalog from 43
- AdminStudio 7.x
 - upgrading Application Catalog from 43
- AdminStudio Shared directory 40, 54, 58, 61
- Application Catalog
 - upgrading the collation setting 50
- application catalogs
 - upgrading 43
- App-V applications
 - evaluating AdminStudio's App-V support 83

B

- batch convert option
 - evaluating 84

C

- collation setting 50

D

- database
 - collation setting 50
 - upgrading 43
- database collation setting 50

E

- evaluating
 - AdminStudio 81
 - AdminStudio's Microsoft App-V support 83
 - batch convert option 84

I

- IIS (Internet Information Services (IIS) 33
- installing
 - AdminStudio 37, 51
 - AdminStudio client tools 38
 - AdminStudio silently 42
 - reactivating AdminStudio on a different computer 77
 - specifying a transform during silent installation 42
 - specifying AdminStudio installation directory during silent installation 42
 - specifying AdminStudio Shared location during silent installation 42
 - specifying InstallShield Editor installation directory 42
 - specifying serial number during silent installation 42

L

- Latin1_General_CI_AS 50

O

- offline activation 75

P

- permissions
 - database server 31
 - minimum for AdminStudio 31

R

- reactivation
 - of AdminStudio on a different computer 77
- registration 65
 - offline 75
- reseller
 - activation of products from 65

S

- serial numbers 64
- Setup Type panel 59
- silent activation 76
- silent installation 42
- SQL_Latin1_General_CP1_CI_AS 50

- system requirements
 - hardware and software 21

T

- trial version
 - AdminStudio 81
- typical vs. complete installation 59

U

- upgrading
 - AdminStudio product Edition 79
 - Application Catalogs 43
 - collation setting of database 50
 - database 43

W

- watermark 83
- web page activation 75